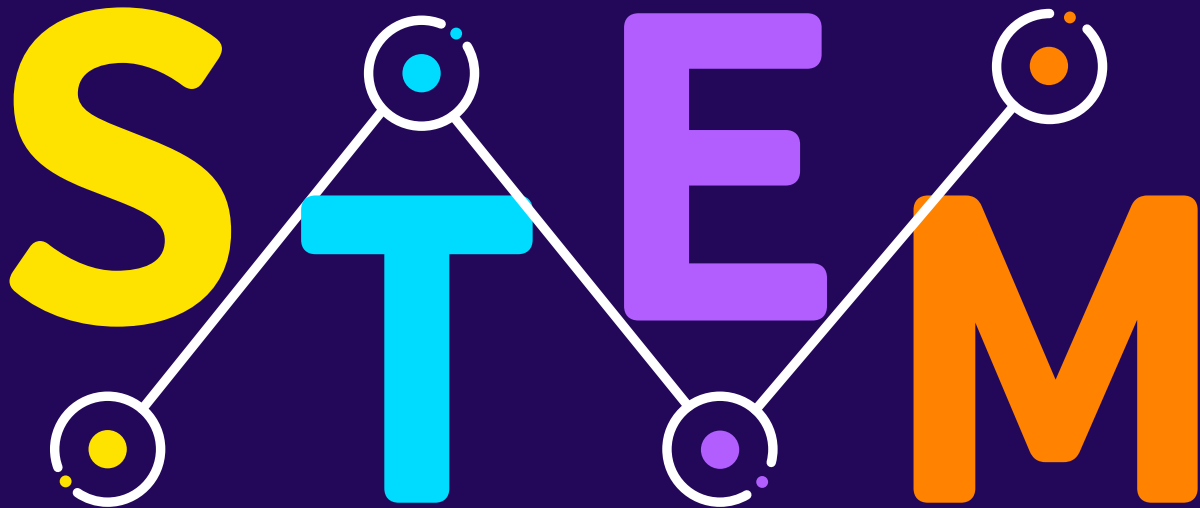


## Scholarships for Women in

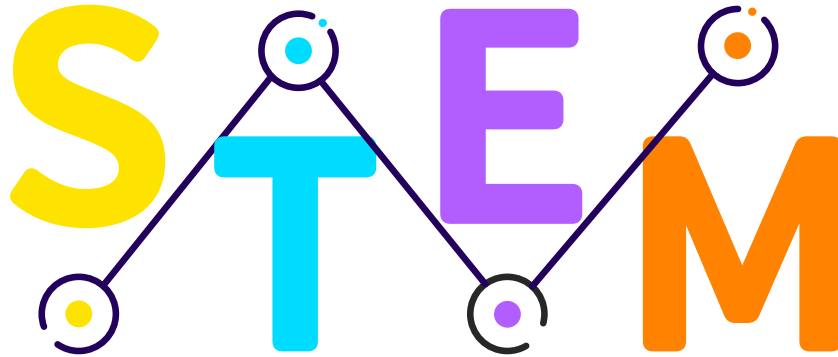
**S** **T** **E** **M**



[#WomenInStem](#)

[#StemHasNoLimits](#)

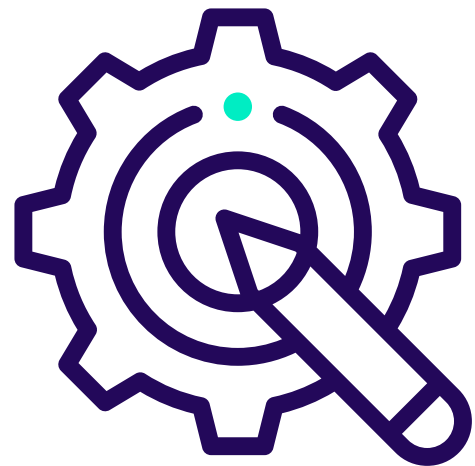
Scholarships for Women in



# PARTNER PACK

---

This partner pack includes information and assets to promote the British Council Scholarships for Women in STEM.



 Stem  
Has No  
Limits

 Women  
In  
Stem

# BACKGROUND

---

The gender gap in STEM is well documented. Not only do women make up a fraction of the workforce and research teams in STEM, they are published less, paid less and are less likely than their male counterparts to reach positions of leadership, despite being proven to be on average 8% more productive.

Considering a typical STEM worker now earns two-thirds more than non-STEM workers, closing the gender gap in STEM can be considered a key strategy in working towards the Sustainable Development Goal (SDG) Five – Gender Equality, and not just in direct terms, but in ways far more wide reaching. For example, there is a robust and positive correlation between women’s authorship of medical research papers, and the likelihood of a study including gender and sex analysis – which is increasingly recognized as a key factor in creating better healthcare, particularly for women and girls.

The British Council has established programmes to support Women and Girls in STEM around the world, designed with a lifecycle approach in mind, from inspiring young girls to stay in STEM to supporting



women working in STEM fields reach positions of leadership and network with their peers in their region and the UK.

Expanding on our current work, we are launching the British Council Scholarships for Women in STEM, for women from South and South East Asia, and the Americas.

# What are the British Council Scholarships for Women in **STEM**?

---

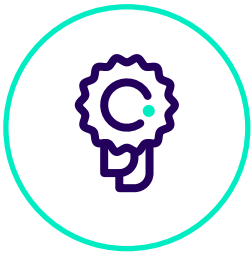
The British Council has launched a scholarship programme in partnership with 19 UK universities aimed at benefiting women from the Americas, South Asia and South East Asia.

We are looking for women with a background in STEM, who can demonstrate their need for financial support and who wish to inspire future generations of women to pursue careers in STEM. Scholarship recipients will receive a scholarship to study a master's degree in a **science**, **technology**, **engineering** or **mathematics** programme at a leading UK university.



# MAIN BENEFITS

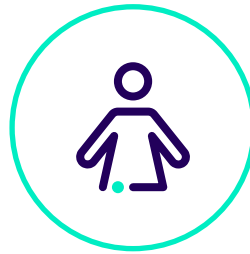
The main benefits for those who receive the scholarships are:



Academic prestige-  
the UK's universities are  
amongst the world's  
leaders in STEM  
subjects



Monetary (tuition fees,  
stipend, travel costs, visa  
and health coverage fees)



Special support  
for mothers



English  
language  
support

Scholarships for Women in

**S** **T** **E** **M**

**#Stem  
HasNo  
Limits**



**#Women  
In  
Stem**

# FULL LIST OF BENEFITS

The exact scholarship benefits may vary slightly from each participating university, but they will be a full scholarship and can be expected to cover the following:



Tuition fees



Stipend for 15 months including accommodation allowance



Allowance to cover accompanying children



English course if required to meet university language requirement



IELTS exam fee



Return travel to the UK



Visa and insurance/NHS surcharge

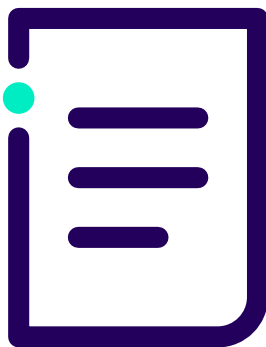
# SCHOLAR ELIGIBILITY CRITERIA

To be eligible for the British Council Scholarships for Women in STEM, the scholar must:

1. Be a woman.
2. Be a passport holder and permanent resident of one of the eligible countries listed below in Table 1.
3. Have submitted an application to study an eligible postgraduate programme in one of the following programme areas and at one of the following UK university partners assigned for each region in Table 2, before their application to British Council Scholarships for Women in STEM can be considered.
4. Have completed all components of an undergraduate degree that will enable them to gain entry onto a postgraduate programme at a UK university partner by the time they submit their application and be due to start their postgraduate programme in the UK during 2021.



5. Have not previously studied at degree level or higher in the UK or lived recently in the UK.
6. Meet the English language requirement of the UK university partner (or is expected to meet the requirement after an English Language pre-sessional course).
7. Demonstrate case for financial support need via a means-test conducted by the UK university partner.
8. Return to their country of citizenship for a minimum of two years after their scholarship award has ended.





# CHART 1

---

## AMERICAS

Argentina  
Brazil  
Colombia  
Cuba  
Jamaica  
Mexico  
Peru  
Venezuela


## SOUTH ASIA

Afghanistan  
Bangladesh  
India  
Nepal  
Pakistan  
Sri Lanka

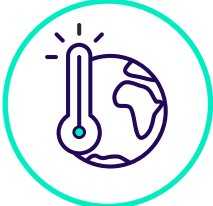
## SOUTH EAST ASIA

Cambodia  
Indonesia  
Laos  
Malaysia  
Myanmar  
Philippines  
Thailand  
Vietnam


# CHART 2

COUNTRIES	ELIGIBLE PROGRAMME AREAS	LIST OF UK PARTNER UNIVERSITIES	UNIVERSITY PROGRAMME/WEBSITE
<p><b>SOUTH ASIA</b> Afghanistan Bangladesh India Nepal Pakistan Sri Lanka</p>	<p><b>Energy Transition</b></p> 	<p><b>Teesside University</b></p> <p><b>City, University of London</b></p> <p><b>University of Strathclyde</b></p>	<p>Electrical Power and Energy Systems Environmental Management</p> <p>Renewable Energy and Power Systems Management Energy and Environmental Technology and Economics Artificial Intelligence</p> <p>Advanced Chemical Engineering Advanced Mechanical Engineering Advanced Mechanical Engineering with Energy Systems Advanced Mechanical Engineering with Industrial Placement Advanced Mechanical Engineering with Power Plant Technologies Electrical Power and Energy Systems Electronic and Electrical Engineering Energy Systems Innovation Offshore Wind Energy</p>

# CHART 2 part\_2

COUNTRIES	ELIGIBLE PROGRAMME AREAS	LIST OF UK PARTNER UNIVERSITIES	UNIVERSITY PROGRAMME/WEBSITE
		<p><b>University of Strathclyde</b></p>	<p>Smart Grids</p> <p>Subsea and Pipeline Engineering</p> <p>Sustainable Engineering: Chemical Processing</p> <p>Sustainable Engineering: Offshore Renewable Energy</p> <p>Sustainable Engineering: Renewable Energy Systems and the Environment</p> <p>Wind Energy Systems</p>
	<p><b>Climate Change</b></p> 	<p><b>University of Strathclyde</b></p>	<p>Environmental Engineering</p> <p>Environmental Consultancy</p> <p>Hydrology and Water Management</p> <p>Environmental Geoscience</p> <p>Renewable Energy, Enterprise and Management (REEM)</p>
	<p><b>Edinburgh Napier University</b></p>	<p>Renewable Energy</p> <p>Environmental Sustainability</p> <p>Architectural Technology and Building Performance</p> <p>Transport Planning and Engineering</p> <p>Wildlife Biology and Conservation</p> <p>Masters by Research (Engineering Disciplines; Applied Sciences)</p>	

# CHART 2 part\_3

COUNTRIES	ELIGIBLE PROGRAMME AREAS	LIST OF UK PARTNER UNIVERSITIES	UNIVERSITY PROGRAMME/WEBSITE
		<p><b>The University of Warwick</b></p>	<p>Environmental Bioscience in a Changing Climate</p> <p>Sustainable Crop Production: Agronomy in the 21st Century</p> <p>Food Security</p>
	<p><b>Health and Life-Sciences</b></p> 	<p><b>The University of Edinburgh</b></p>	<p>Biochemistry</p> <p>Biodiversity and Taxonomy of Plants</p> <p>Biotechnology</p> <p>Drug Discovery and Translational Biology</p> <p>Evolutionary Genetics</p> <p>Human Complex Traits Genetics</p> <p>Biomedical Science</p> <p>Public Health</p> <p><small>*only eligible for applications from Bangladesh, India and Pakistan</small></p>
		<p><b>Brunel University London</b></p>	<p>Public Health and Health Promotion</p> <p>Disease Mechanisms and Therapeutics</p> <p>Biomedical, Biomechanics and Bioelectronics Engineering</p>

# CHART 2 part\_4

COUNTRIES	ELIGIBLE PROGRAMME AREAS	LIST OF UK PARTNER UNIVERSITIES	UNIVERSITY PROGRAMME/WEBSITE
<p><b>AMERICAS</b></p> <p>Argentina Brazil Colombia Cuba Jamaica Mexico Peru Venezuela</p>	<p><b>Health and Life-Sciences</b></p> <p><b>Climate Change</b></p> <p><b>Energy Transition Environment</b></p> <p><b>Agriculture</b></p> <p><b>Industry 4.0</b></p> <p><b>Conversion masters from BA/MA in a range of disciplines</b></p>	<p><b>Imperial College London</b></p> <p><b>Bangor University</b></p>	<p>International Health Management</p> <p>Climate Change, Management and Finance</p> <p>Environmental Engineering</p> <p>Hydrology and Water Resources Management</p> <p>Transport</p> <p>Ecology, Evolution and Conservation</p> <p>Taxonomy, Biodiversity and Evolution</p> <p>Green Chemistry, Energy and the Environment</p> <p>Environmental Technology</p> <p>Environmental Data Science and Machine Learning</p> <p>Advanced Chemical Engineering</p> <p>Sustainable Energy Futures</p> <p>Marine Environmental Protection</p> <p>Marine Biology</p> <p>Marine Renewable Energy</p> <p>Applied Marine Geoscience</p> <p>Physical Oceanography</p> <p>Agroforestry &amp; Food Security</p> <p>Environmental Forestry</p> <p>Conservation &amp; Land Management</p> <p>Environmental &amp; Business Management</p> <p>Molecular Biology with Biotechnology</p> <p>Advanced Computer Science</p> <p>Computing</p>

COUNTRIES	ELIGIBLE PROGRAMME AREAS	LIST OF UK PARTNER UNIVERSITIES	UNIVERSITY PROGRAMME/WEBSITE
		<p><b>Bangor University</b></p>	<p>Computing for Data Science</p> <p>Advanced Data Science</p> <p>Rise of the Machines (AI &amp; Machine Learning)</p> <p>Broadband and Optical &amp; Communications</p> <p>Electronic Engineering</p> <p>Nanotechnology and Microfabrication</p> <p>Biomedical Science</p> <p>Medical Molecular Biology with Genetics</p> <p>Public Health &amp; Health Promotion</p> <p>Leading Quality Improvement (Healthcare Services)</p> <p>Dementia Studies</p> <p>Advanced Healthcare Practice</p> <p>Exercise Rehabilitation</p> <p>Sport and Exercise Psychology</p> <p>Applied Sport &amp; Exercise Physiology</p> <p>Clinical &amp; Health Psychology</p> <p>Principles of Clinical Neuropsychology</p> <p>Neuroimaging</p> <p>Psychology</p> <p>Psychological Research</p>
		<p><b>Cranfield University</b></p>	<p>Advanced Process Engineering</p> <p>Renewable Energy</p> <p>Global Environmental Change</p> <p>Future Food sustainability</p>

COUNTRIES	ELIGIBLE PROGRAMME AREAS	LIST OF UK PARTNER UNIVERSITIES	UNIVERSITY PROGRAMME/WEBSITE
		<p><b>Cranfield University</b></p>	<ul style="list-style-type: none"> <li>Advanced Chemical Engineering</li> <li>Advanced Digital Energy Systems</li> <li>Advanced Mechanical Engineering</li> <li>Energy Systems and Thermal Processes</li> <li>Offshore Engineering</li> <li>Advanced Water Management</li> <li>Water and Sanitation for Development</li> <li>Water and Wastewater Engineering</li> <li>Engineering and Management of Manufacturing Systems.</li> <li>Management and Information Systems</li> <li>Environmental Engineering</li> <li>Environmental Management for Business</li> <li>Geographical Information Management</li> </ul>
		<p><b>Durham University</b></p>	<ul style="list-style-type: none"> <li>New and Renewable Energy</li> <li>Electronic and Electrical Engineering</li> <li>Data Science</li> </ul>
		<p><b>Robert Gordon University</b></p>	<ul style="list-style-type: none"> <li>Solar Energy Systems</li> <li>Biomedical Technology (January start only)</li> <li>Information Technology with Cyber Security</li> <li>Information Technology with Network Management</li> <li>Information Technology with Business Intelligence</li> </ul>

# CHART 2 part\_7




COUNTRIES	ELIGIBLE PROGRAMME AREAS	LIST OF UK PARTNER UNIVERSITIES	UNIVERSITY PROGRAMME/WEBSITE
		<b>Robert Gordon University</b>	<b>Cyber Security</b> <b>Data Science</b> <b>Public Health and Health Promotion (January start only)</b> <b>Clinical Pharmacy Service Development (January start only)</b> <b>Pharmaceutical Science</b> <b>Analytical Sciences Drug Analysis and Toxicology</b> <b>Analytical Sciences Environmental Analysis</b> <b>Analytical Sciences Food Analysis Authenticity and Safety</b> <b>IT for Energy</b>
		<b>University of York</b>	<b>Biotechnology</b> <b>Biomedical Sciences</b> <b>Green Chemistry and Sustainable Industrial Technology</b> <b>Environmental Economics and Environmental Management</b> <b>Environmental Science and Management</b> <b>Corporate Sustainability and Environmental Management</b> <b>Sustainability Science</b> <b>Sustainability Studies</b> <b>Public Health</b> <b>Health Research</b> <b>Health Economics</b>
		<b>University of Bristol</b>	<b>Bioinformatics</b> <b>Biomedical Sciences Research</b>



# CHART 2 part\_8

COUNTRIES	ELIGIBLE PROGRAMME AREAS	LIST OF UK PARTNER UNIVERSITIES	UNIVERSITY PROGRAMME/WEBSITE
			<div data-bbox="764 365 1440 636"><p><b>University of Bristol</b></p><ul style="list-style-type: none"><li>Public Health</li><li>Epidemiology</li><li>Climate Change Science and Policy</li><li>Environmental Policy and Management</li></ul></div> <div data-bbox="764 667 1440 1173"><p><b>University of Wolverhampton</b></p><ul style="list-style-type: none"><li>Artificial Intelligence</li><li>Cyber Security</li><li>Wildlife Conservation Applied Microbiology and Biotechnology</li><li>Advanced Technology Management (Sustainability)</li><li>Building Information Modelling for Integrated Construction</li><li>Programme and Project Management</li><li>Public Health</li></ul></div>

# CHART 2 part\_9

COUNTRIES	ELIGIBLE PROGRAMME AREAS	LIST OF UK PARTNER UNIVERSITIES	UNIVERSITY PROGRAMME/WEBSITE
<p><b>SOUTH EAST ASIA</b>            Cambodia            Indonesia            Laos            Malaysia            Myanmar            Philippines            Thailand            Vietnam</p>	<p><b>Energy Transition and Climate Change</b></p> 	<p><b>University of Glasgow</b></p>	<p>Sustainable Energy            Earth Futures: Environments, Communities, Relationships            Sustainable Water Environments</p>
	<p><b>Health and Life-Sciences</b></p> 	<p><b>Liverpool John Moores University</b></p>	<p>Public Health            International Public Health            Public Health Addictions            Sport Nutrition            Clinical Exercise Physiology            Biomedical Sciences            Cosmetic Science            Drug Discovery, Development and Delivery            Industrial Biotechnology            Natural Products Discovery            Forensic Biosciences</p>
	<p><b>Agriculture</b></p> 	<p><b>University of Stirling</b></p>	<p>Sustainable Aquaculture            Aquatic Pathobiology            Aquatic Veterinary Studies</p>

# Scholars are also required to show in their application form that:

- They are active in the field with work experience or with a proven interest in the programme area they are applying for.
- They are willing to demonstrate future contribution to capacity-building and socio-economic advancement through the benefits achieved after graduating from UK higher education and returning to their home country.
- They can demonstrate a plan and passion to engage other women and girls in STEM from their home country.
- They agree that their personal data can be shared with the British Council as a condition of applying for the bursary.

If they are awarded a scholarship, they agree to maintain contact with the British Council and act as an ambassador for the UK and engage with activities as part of a British Council Scholarships for Women in STEM alumnus during and after their study in the UK. Any involvement in these activities during their study in the UK will take up to no more than five hours per term.



# Scholars are not eligible for a British Council Scholarship for Women in STEM if they:

- Hold dual British citizenship.
- Are an employee, a former employee, or relative (\*) of an employee of Her Majesty's Government (including British Embassies/High Commissions; the Department for Business, Energy and Industrial Strategy; Department for International Trade; the Ministry of Defence; and the Home Office).
- Are an employee, a former employee, or relative (\*) of an employee of the British Council Scholarships for Women in STEM – eligible countries.  
(\*): Relatives are defined as parents or step-parents, siblings or step-siblings, children or step-children, spouse, civil partner or unmarried partner (where the couple have been in a relationship akin to marriage or civil partnership for at least two years).
- Are currently in receipt of financial support or funding towards your study programme in the UK from any other source.
- Have previously studied in the UK with funding from a UK Government-funded scholarship or a UK institutional scholarship/financial bursary.

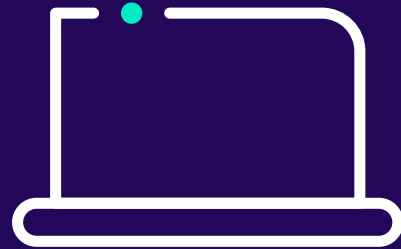


# Website

---

The primary information about the scholarship for potential candidates can be found centrally on the British Council's page:

<https://www.britishcouncil.org/study-work-abroad/in-uk/scholarship-women-stem>



# Key dates

---

**January** – Launch of British Council Women in STEM scholarships

**11 February** – Launch of inspirational video invitation for the scholarships on International Day of Women and Girls in Science

**8 March** – International Women's Day will be a key date for promotion of the scholarships

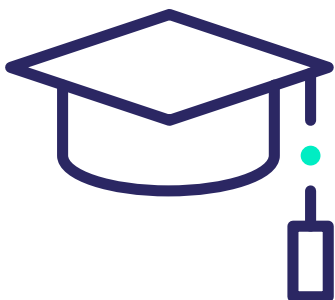
**March 2021**  
Scholarship applications close.

# Key messages for applicants

---

- Do you want to continue studying and challenging yourself with all that STEM has to offer you? If you are working in engineering, mathematics, science or technology and you have your bachelor's degree in one of these fields, click [here](#) and apply for the British Council Scholarships for Women in **STEM** for graduate study in the UK.

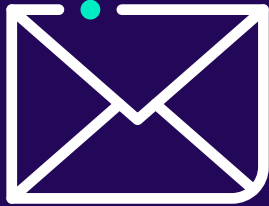
- Throughout history there have been pioneering women in different areas of science, technology, engineering, and mathematics that have changed the world. Like these women, you will be able to transform the world that we know in the future. Apply to our scholarships for graduate study in STEM in the UK: <https://www.britishcouncil.org/study-work-abroad/in-uk/scholarship-women-stem>



## Video

---

We will provide partners with an inspirational video invitation for the British Council Scholarships for Women in STEM which we will launch on International Day of Women and Girls in Science on 11th February 2021.



## E-mail copy

### Be the future – support for women to lead in STEM innovation

Are you looking for the qualification that could make the difference in your science, technology, engineering or maths (STEM) career?

The British Council is offering a prestigious scholarship for female STEM graduates to study a Masters in the UK.

Particularly if you are a single mother or face other economic challenges, the British Council Scholarships for Women in STEM could be your route to a world class qualification which will lead you to a position of influence.

### Benefits include:

- Fully paid tuition to study at a university in a country which is a world leader in STEM subjects
- Grant to cover living costs for fifteen months
- Special support for mothers
- The internationally valued prestige of being a British Council Scholar

### Find out more on the British Council's website:

<https://www.britishcouncil.org/study-work-abroad/in-uk/scholarship-women-stem>



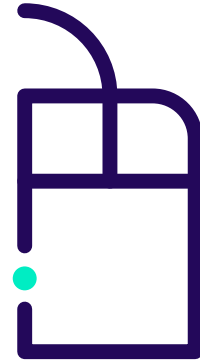
# Social media

---

## Hashtags

---

The primary hashtag to promote the British Council Scholarships for Women in STEM will be **#WomenInSTEM**. The secondary hashtag will be **#STEMHasNoLimits**.



## Sample paid tweets

---

The British Council Scholarships for Women in STEM – full package of support to study a Masters in a STEM subject at a UK university for women who meet the criteria. Find out more.

Want to study a Masters in a STEM subject but find the cost prohibitive? The British Council Scholarships for Women in STEM offers full support for women who meet the criteria. Find out more.



# Sample organic tweets

---

The British Council Scholarships for Women in STEM – full package of support to study a Masters in a STEM subject at a UK university for women who meet the criteria. Find out more.

Are you a woman looking to take your science, engineering, technology or maths career a stage further? If you can demonstrate the need for financial support, the British Council could offer you financial assistance to study a game-changing Masters degree in the UK. Find out more

Like to study a science, engineering, technology or maths Masters in the UK but worried about childcare? The British Council Scholarships for Women in STEM offers a full package of support for women who meet the criteria. Find out more.



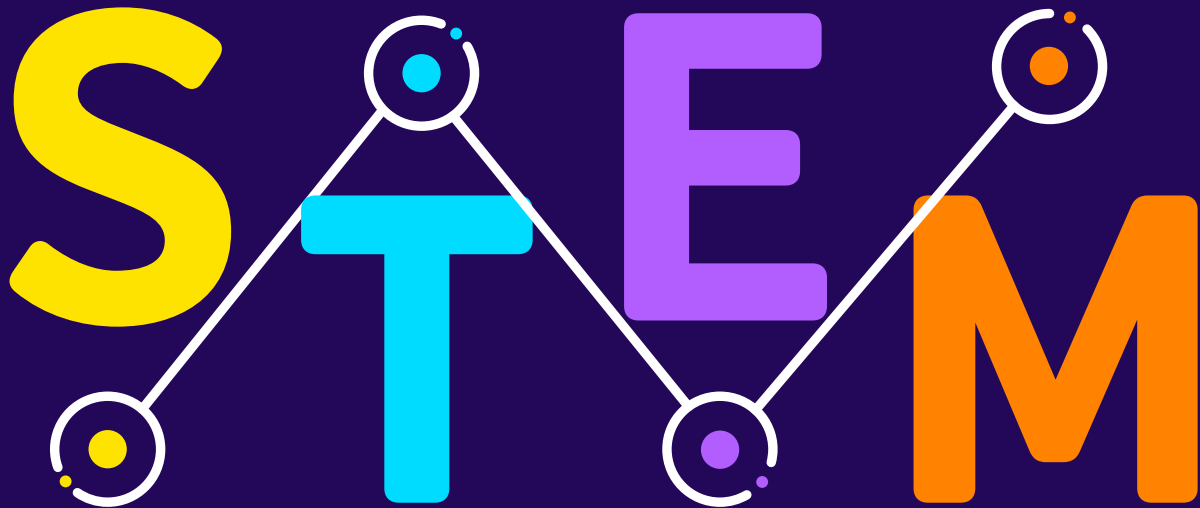
# British Council contacts

---

- Contact Trinidad Garcia at [trinidad.garcia@britishcouncil.org](mailto:trinidad.garcia@britishcouncil.org) with any questions about the scholarships.
- Contact Jenna Hartsell at: [jenna.hartsell@britishcouncil.org](mailto:jenna.hartsell@britishcouncil.org) or Susy Villafane at: [susy.villafane@britishcouncil.org](mailto:susy.villafane@britishcouncil.org) with any questions about marketing and promotion for the scholarships.

## Scholarships for Women in

**S** **T** **E** **M**



[#WomenInStem](#)

[#StemHasNoLimits](#)