

# ProtectED™

Code of Practice

Safeguarding the HEI student experience

Andrew B. Wootton

*Director*

*ProtectED*



# What is ProtectED?

- ◆ ProtectED is a **not-for-profit membership organisation** that aims to improve the safety, security and wellbeing of students in Higher Education through **improved standards**



# Problem context

## 360° Student experience

# Problem context



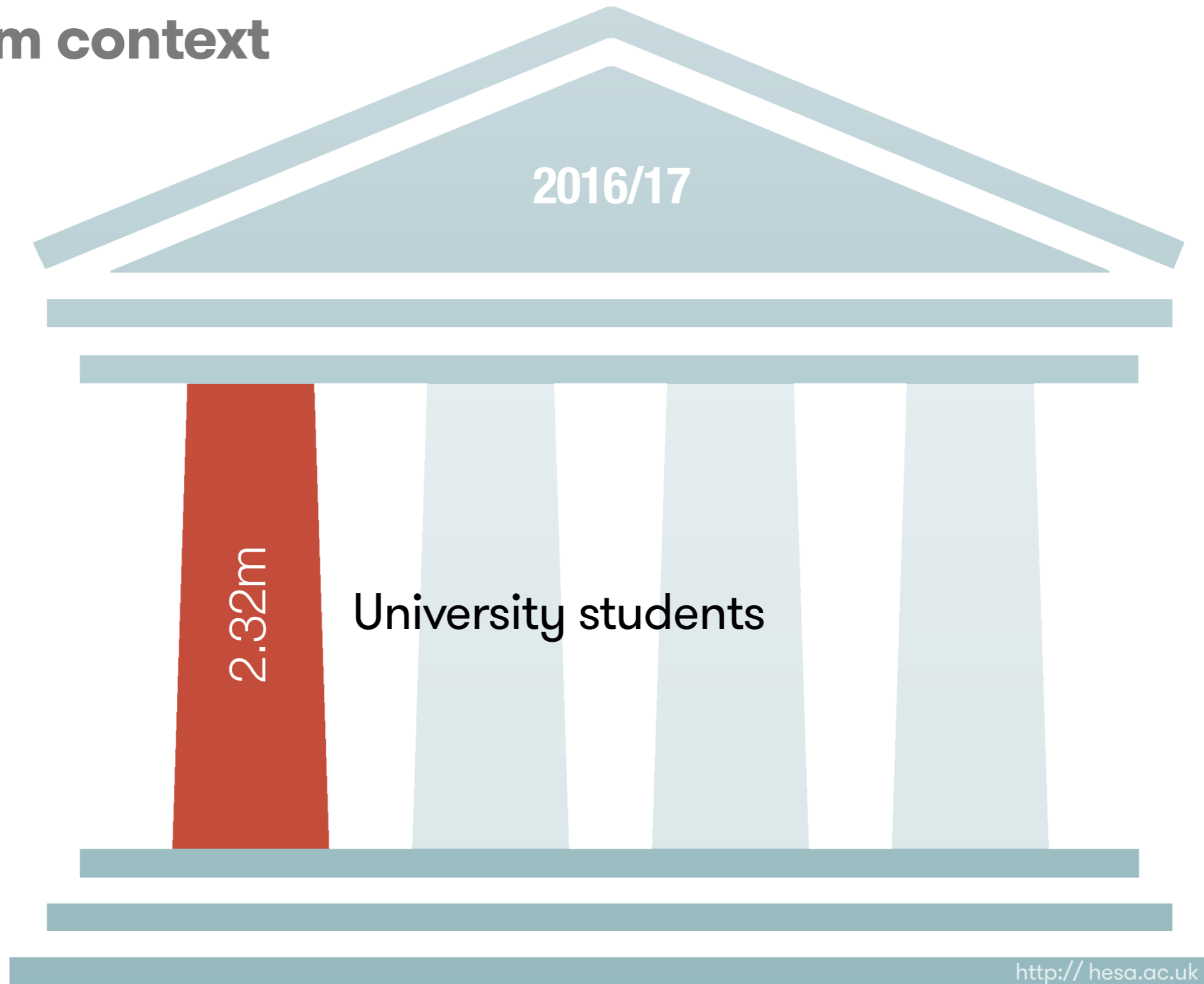
360°



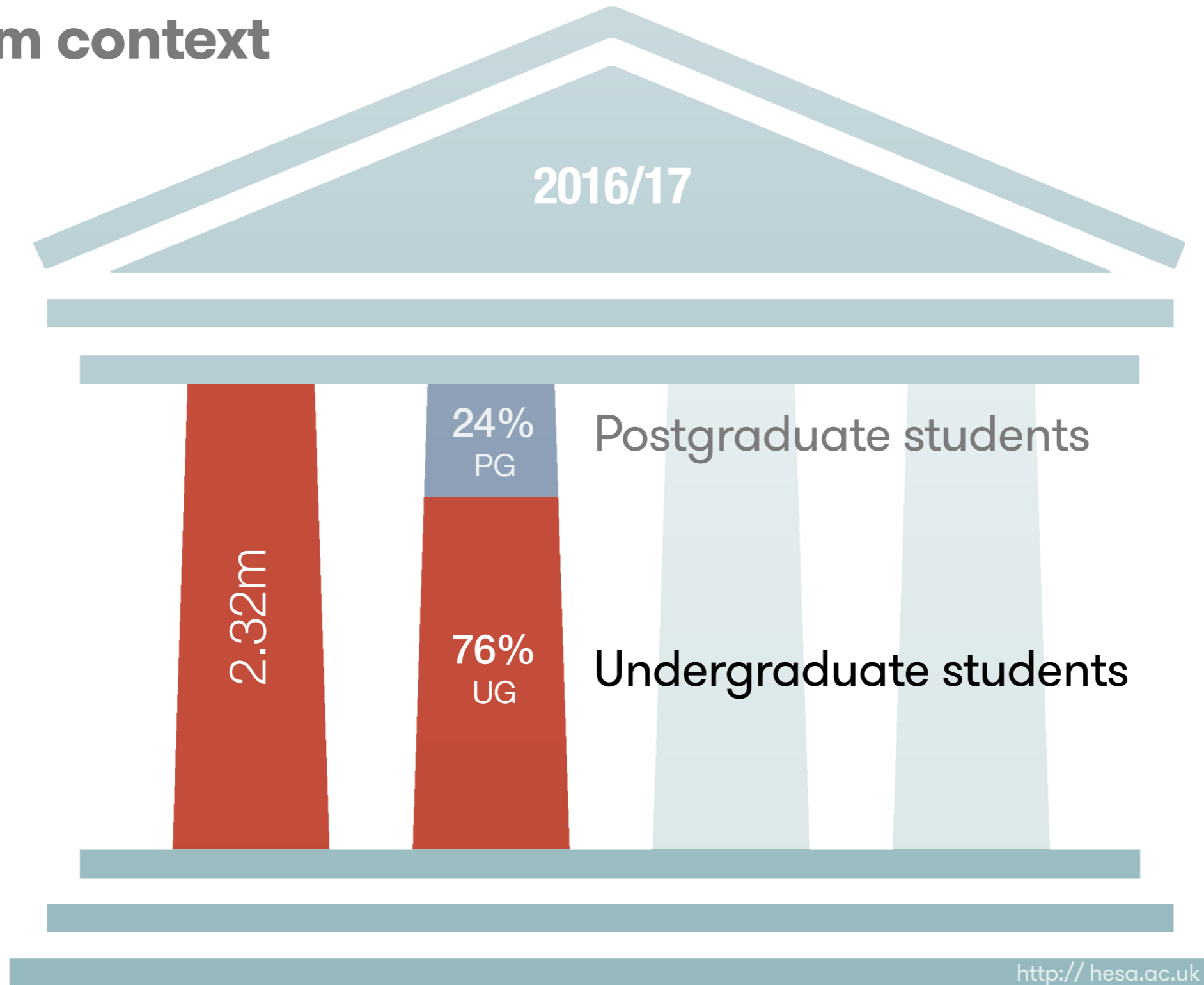
# Student experience



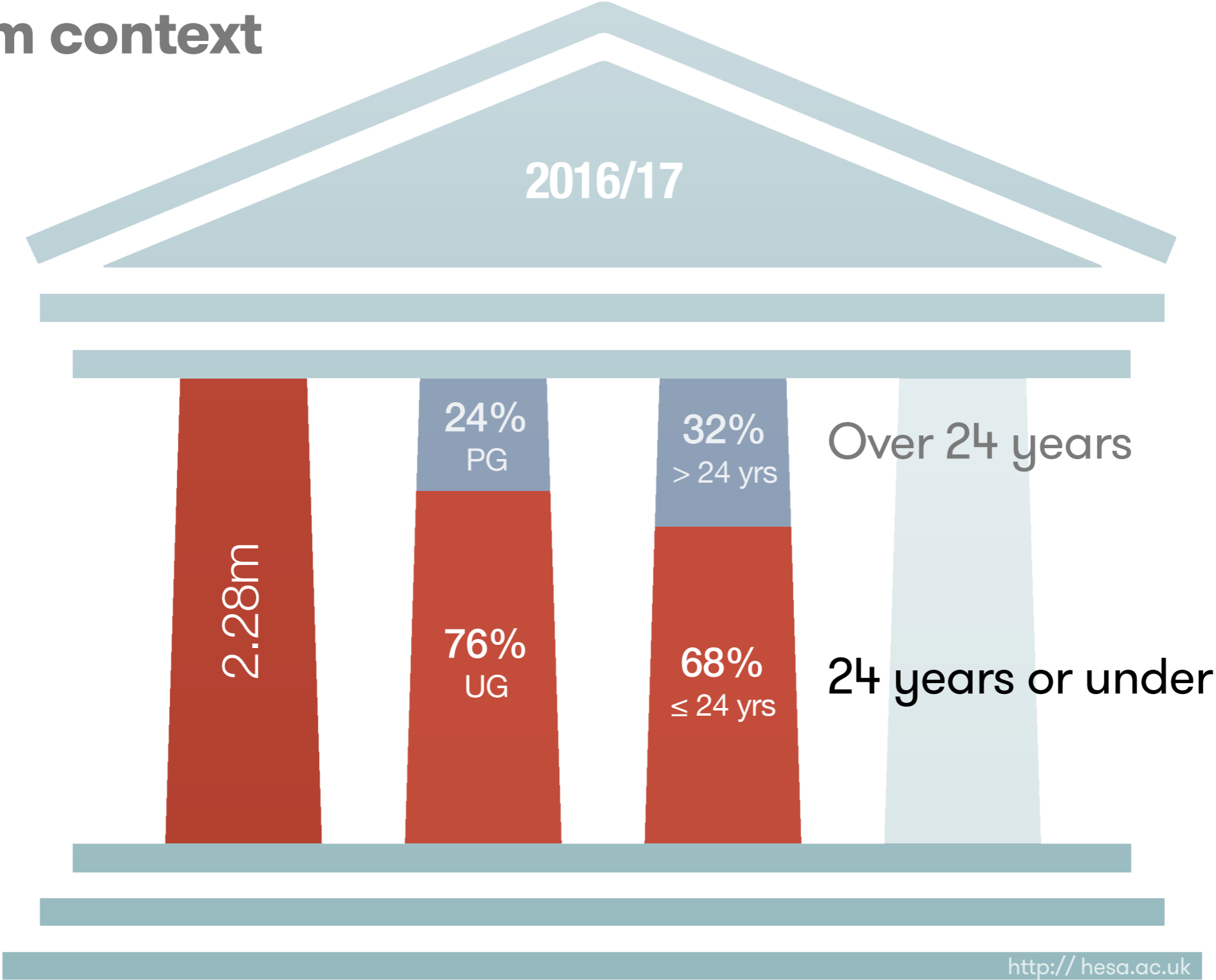
# Problem context



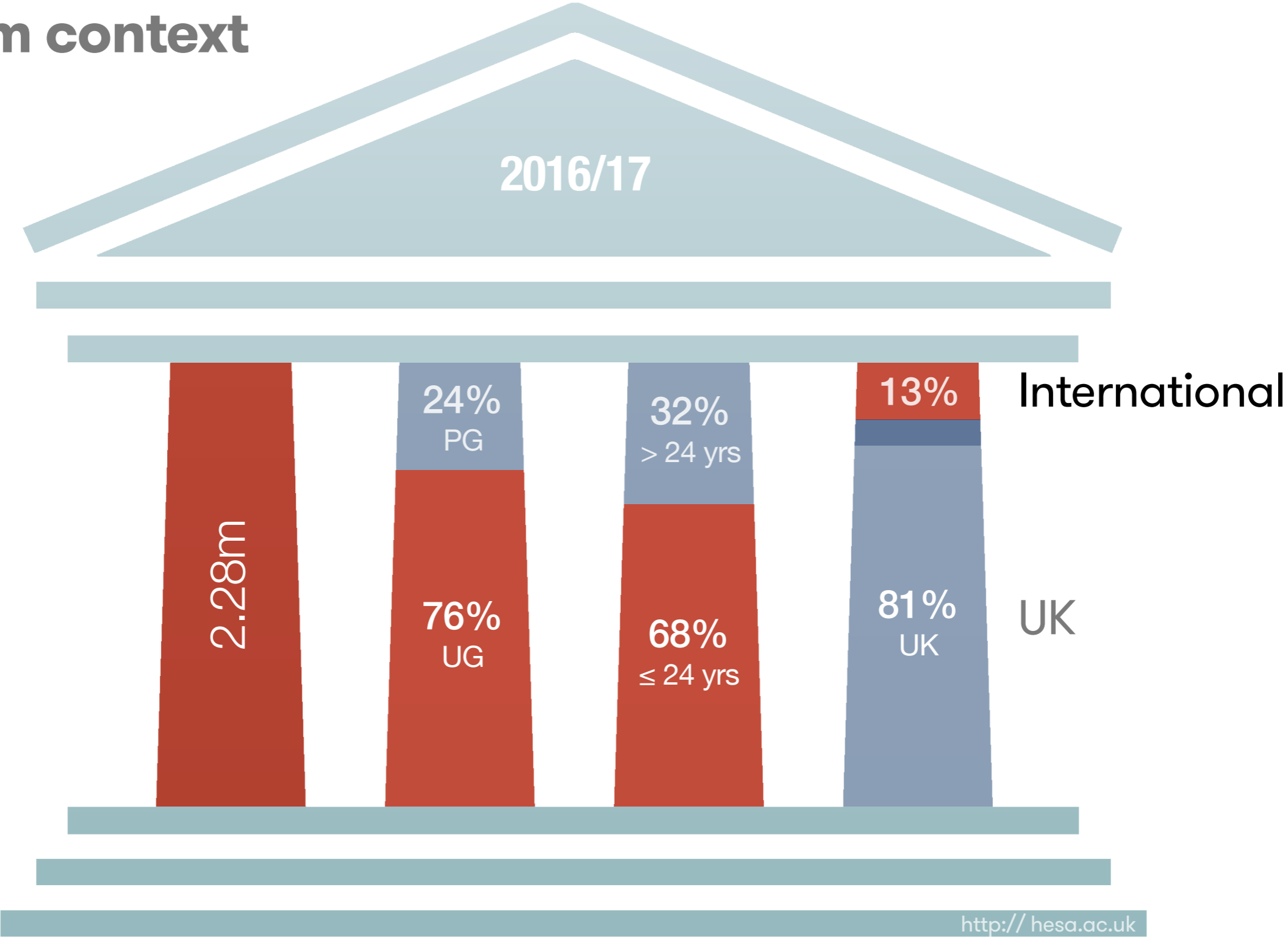
# Problem context



# Problem context



# Problem context





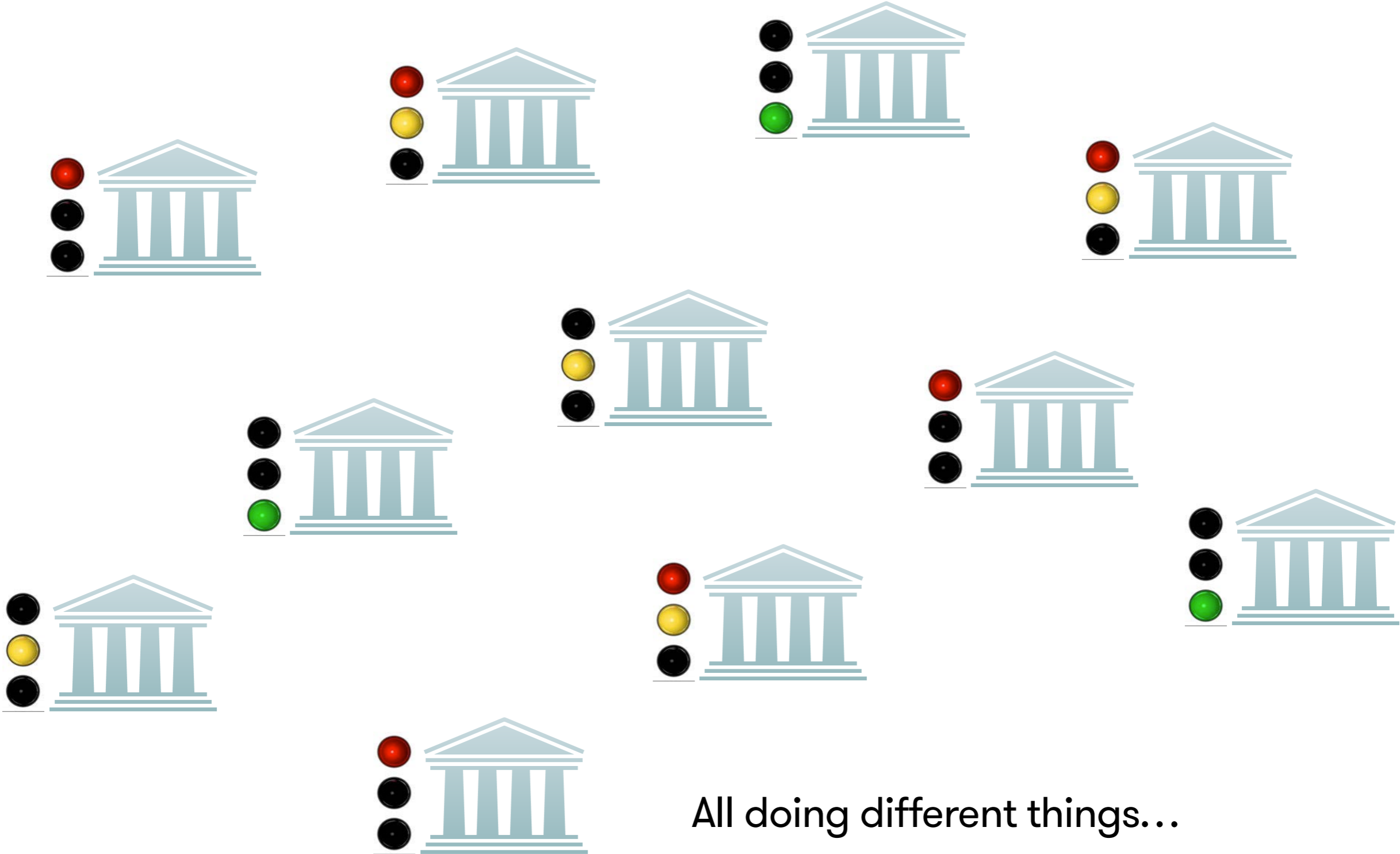
# Problem context



# Problem context



# Problem context

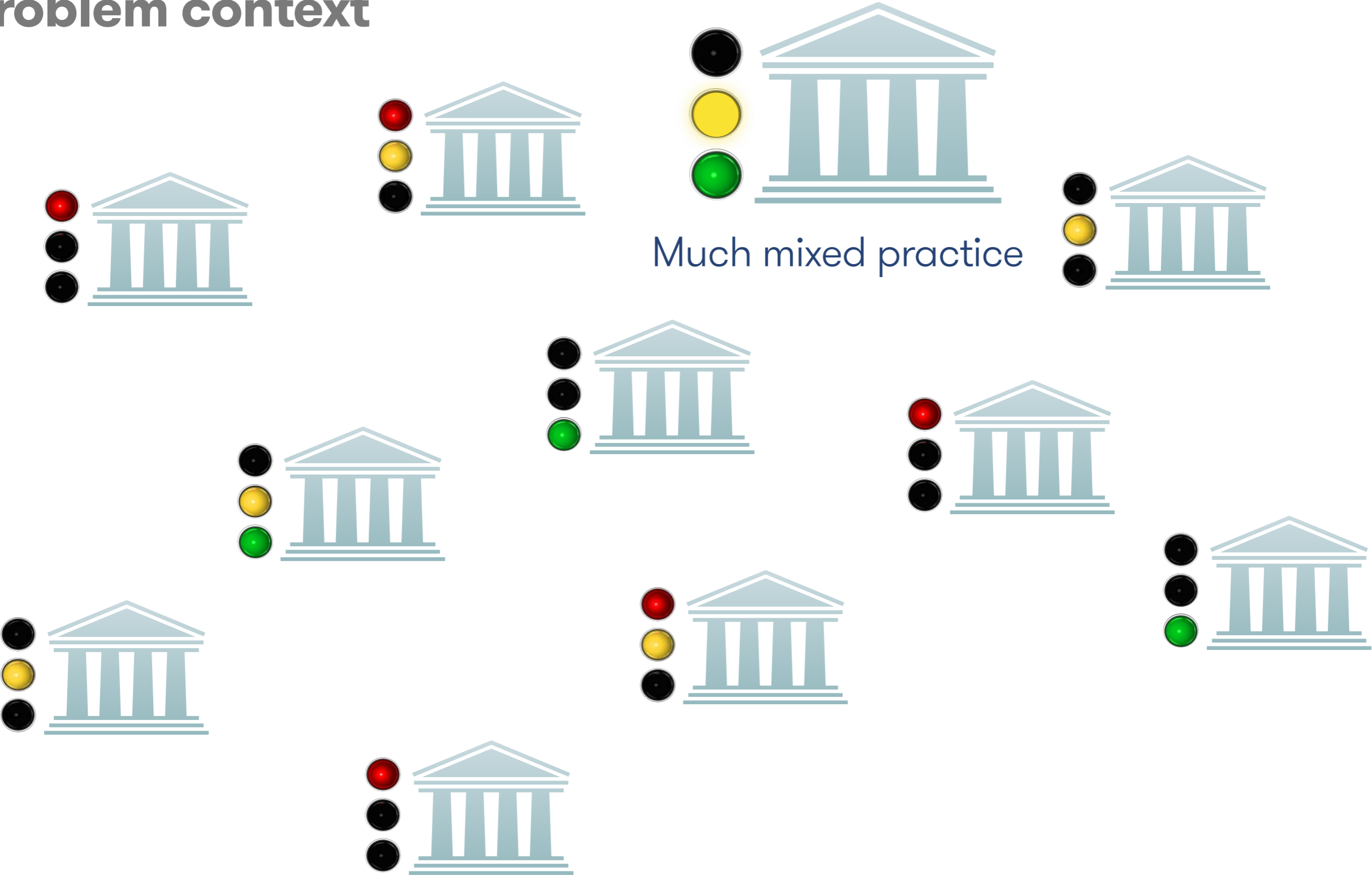


All doing different things...

# Problem context



# Problem context



Much mixed practice

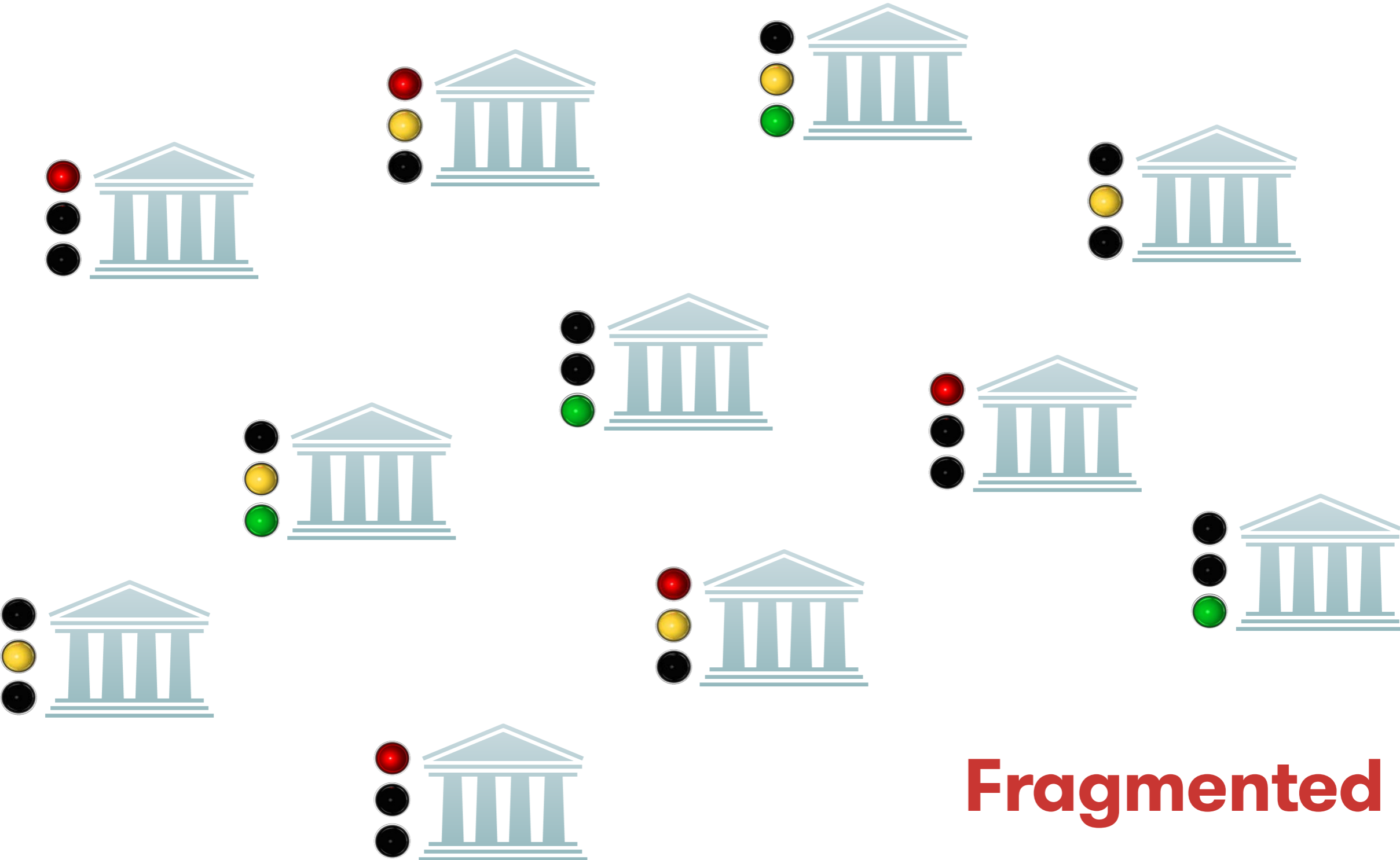
# Problem context



Some bad practice



# Problem context



**Fragmented**

# Problem context





# Problem context

- ◆ Students more likely to be victims of crime than the general population (CSEW 2014–15)
  - For some crimes, the difference can be considerable (E.g. for mugging the risk is double)



# Student crime victimisation

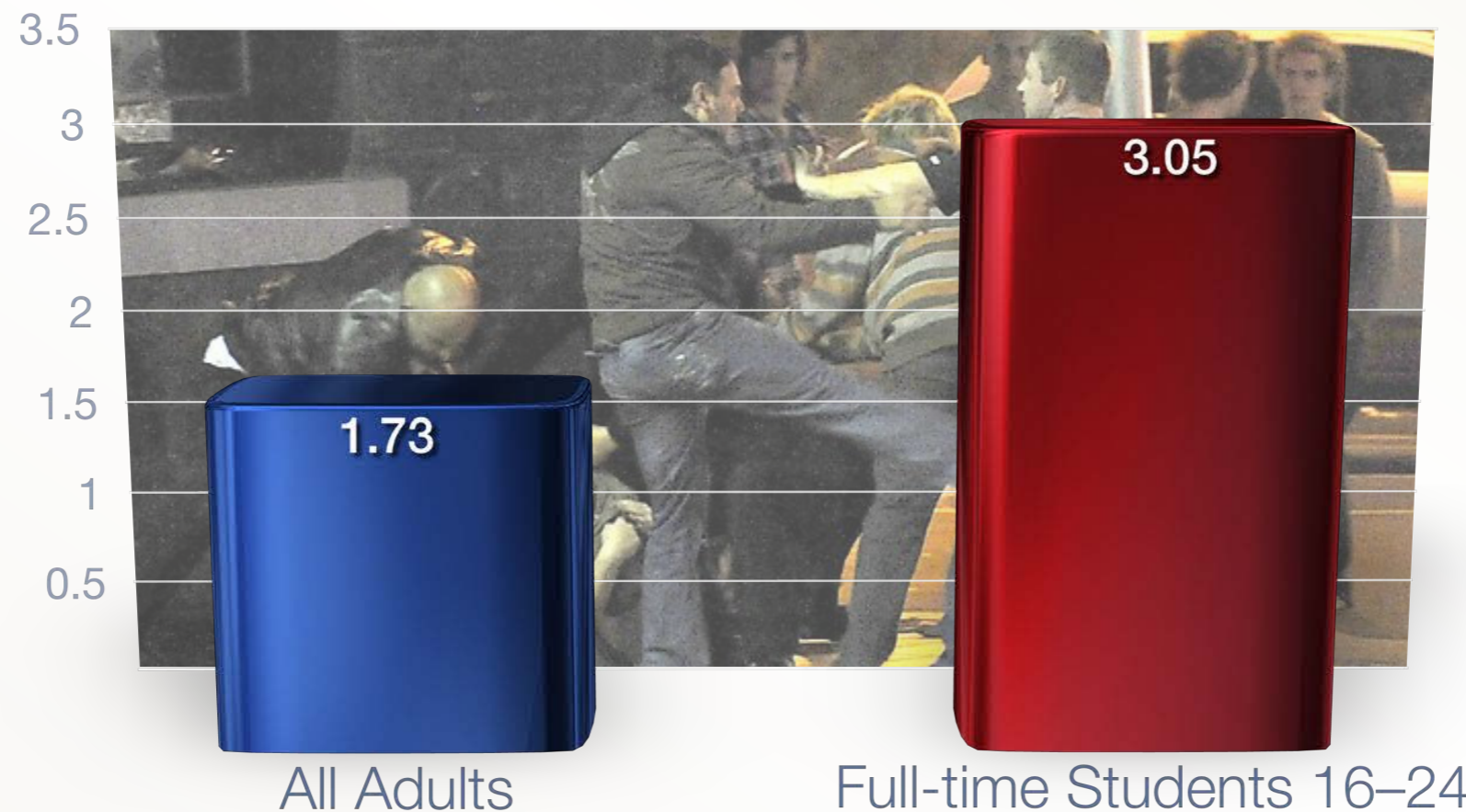
- Percentage of all **mugging\*** offences for all adults and young adults in full-time education (CSEW 2014-15)



\*mugging = robbery + snatch theft

# Student crime victimisation

- Percentage of all violent offences for all adults and young adults in full-time education (CSEW 2014-15)



# Problem context

- ◆ Students more likely to be victims of crime than the general population (CSEW 2014–15)
  - For some crimes, the difference can be considerable (E.g. for mugging the risk is double)
- ◆ Students increasingly experiencing mental health issues
  - 2016 Unite Students survey of 6,000+ students found 12% considered themselves to have a mental illness, while 32% reported ‘always’ or ‘often’ feeling “down or depressed”



# Problem context

◆ Consequences

# Problem context

## Consequ



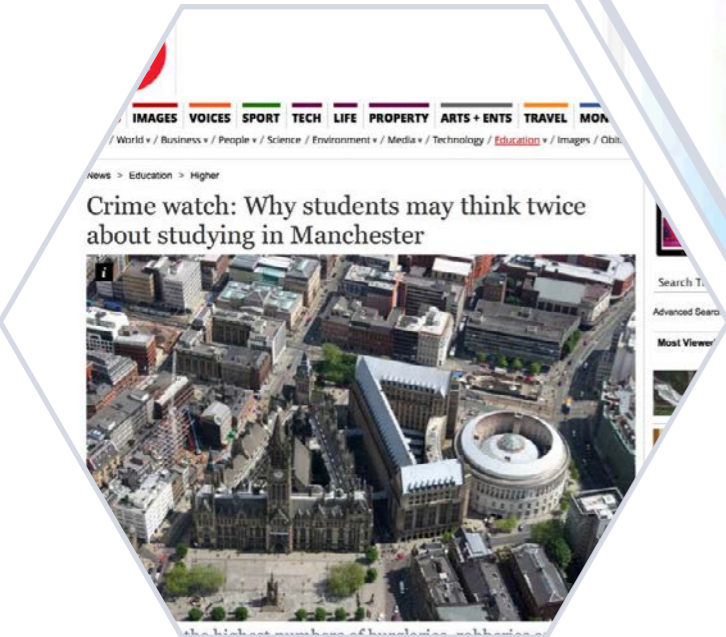
# Problem context

## Consequ



# Problem context

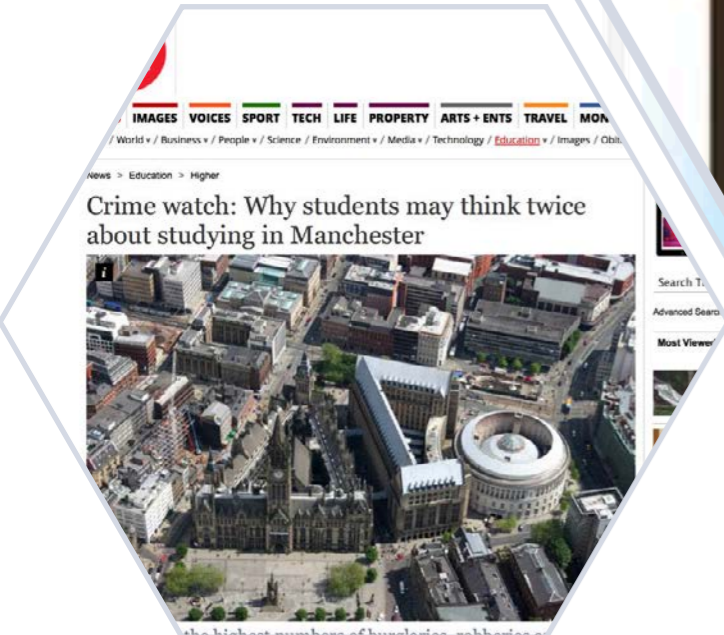
## Consequ





# Problem context

## Consequences



# Problem context

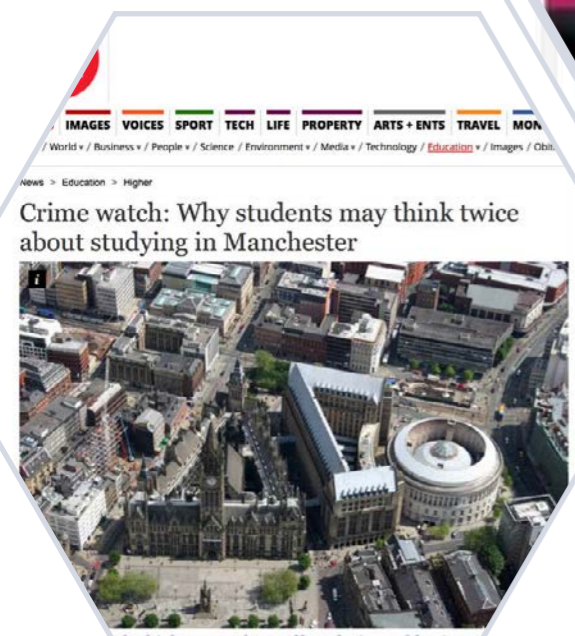
## Consequ



### Education

## Student sexual violence: 'leaving each university to deal with it isn't working'

Victims of rape and sexual assault say they are not being taken seriously by elite universities, with devastating results, a Guardian investigation reveals



# Problem context

## Consequences

WTOC.com  
Local. Now.

NEWS WEATHER SPORTS VIDEO TRAFFIC TV LOWCOUNTRY COMM.

## Jury awards \$10 million to rape victim in 2013 attack on Savannah State campus

Published: Thursday, October 26th 2017, 6:01 pm BST  
Updated: Thursday, October 26th 2017, 6:08 pm BST

By WTOC Staff [CONNECT](#)

[f](#) [t](#) [p](#) [e](#)



Surveillance of Scott shown in court.  
(Source: WTOC)

SAVANNAH, GA (WTOC) - A Chatham County jury has returned a \$10 million verdict in a civil case against the owner of a housing complex where a rape occurred on the campus of Savannah State University in 2013.

According to Attorney Mark Tate, the civil case was against Savannah State University Foundation Real Estate Ventures LLC, the company that owns the housing complex where the attack occurred, due to a lack of security on campus.

The suspect in this case, Torrey Scott, was charged with raping three women and the rape and murder of a Port Wentworth woman in four separate attacks all within three months of each other. Two of those women were students at Savannah State.

In one of the other cases, Scott forced a pregnant woman out of her car from the Candler Hospital parking lot, drove her to a bank and had her withdraw money, and then sexually assaulted her.

IMAGES VOICES SPORT TECH LIFE PROPERTY ARTS + ENTS TRAVEL MON

World / Business / People / Science / Environment / Media / Technology / Education / Images / Other

News > Education > Higher

### Crime watch: Why students may think twice about studying in Manchester

# Problem context

● Co



# Problem context

## Consequ

**Jury awards \$10 million to rape victim in 2013 attack on Savannah State campus**

Published: Thursday, October 26th 2017, 6:01 pm BST  
Updated: Thursday, October 26th 2017, 6:08 pm BST  
By WTQC Staff | CONNECT

SAVANNAH, GA (WTQC) - A Chatham County jury has awarded a \$10 million verdict in a civil case against the owner of a campus complex where a rape occurred on the campus of Savannah State University in 2013.

According to Attorney Mark Tate, the civil case is against Savannah State University Foundation Ventures LLC, the company that owns the housing complex where the attack occurred, due to a lack of security on campus.

The suspect in this case, Torrey Scott, was charged with the rape and murder of a Port Wentworth woman in four separate attacks all within months of each other. Two of those women were students at Savannah State.

In one of the other cases, Scott forced a pregnant woman out of her car from the Candler Hospital parking lot, drove her to a nearby house, and had her withdraw money, and then sexually assaulted her.

**Crime watch: Why students may think twice about studying in Manchester**

News > Education > Higher

The highest number of burglaries, robberies, and other crimes in Manchester...

the guardian

UK world politics sport football opinion culture business lifestyle

home > UK > education media society law scotland wales northern ireland

Students Guardian Students

# Majority of students experience mental health issues, says NUS survey

The survey, released as MPs meet to discuss student mental health, also shows 54% don't seek help

Large r...  
sleepi...

# Problem context

## Consequences

**Jury awards \$10 million to rape victim in 2013 attack on Savannah State campus**

Published: Thursday, October 26th 2017, 6:01 pm BST  
Updated: Thursday, October 26th 2017, 6:08 pm BST  
By WTOC Staff CONNECT

SAVANNAH, GA (WTOC) - A Chatham County jury awarded a \$10 million verdict in a civil case against the university in 2013.

According to Attorney Mark Tate, the civil case is against Savannah State University Foundation Ventures LLC, the company that owns the house where the attack occurred, due to a lack of security on the property.

The suspect in this case, Torrey Scott, was charged with the rape and murder of a Port Wentworth woman in four separate attacks all within months of each other. Two of those women were students at Savannah State.

In one of the other cases, Scott forced a pregnant woman from the Candler Hospital parking lot, drove her to a nearby house, and had her withdraw money, and then sexually assaulted her.

**Crime watch: Why students may think twice about studying in Manchester**

News > Education > Higher

Images: VOICES SPORT TECH LIFE PROPERTY ARTS+ENTS TRAVEL MON

World > Business > People > Science > Environment > Media > Technology > Education > Images > Other

Search

Advanced Search

Most Viewed

Manchester cityscape

# University student jumped to her death from halls of residence after her exam results weren't good enough to follow her dream of becoming a research scientist

- University of Salford student wanted first-class degree in biology course
- But 20-year-old was devastated when she got a 2:2 in second-year exams
- She died after night out with friends and left notes for family revealing depression

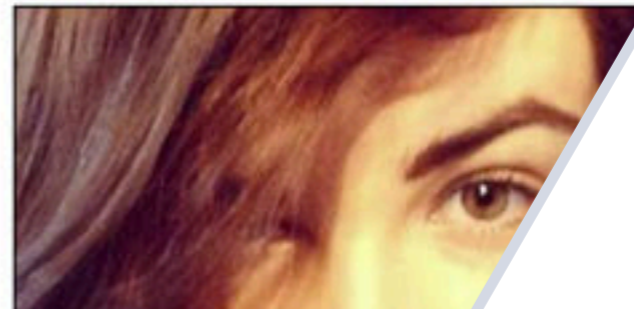
By STEPH COCKROFT FOR MAILONLINE

PUBLISHED: 11:29, 27 January 2016 | UPDATED: 01:35, 28 January 2016

Share 495 shares

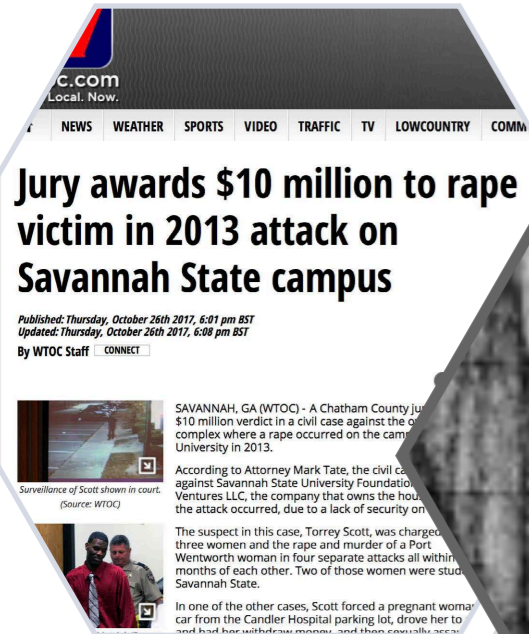
University student jumped 120 feet to her death from halls of residence after she feared her exam results would stop her becoming a research scientist, an inquest has heard.

McDonald, 20, was determined to get a first-class degree as part of her life's ambition to become a 'top scientist'.



# Problem context

## Consequ



**UK student suicide rate “rises by 56% in 10 years’ to 2016... overtaking the suicide rate of young people in the general population for the first time”**

Centre for Suicide Research & Prevention, HKU  
Times Higher education.com



# Problem context

## Consequences





# Creation of ProtectED

- ◆ Three-year research and development process
  - 10 × Focus Groups with university security managers & police
  - National survey of University security managers & police
  - 5 × Focus groups with Students' Union student welfare officers
  - National survey with NUS of UK students – **800 respondents**

## University security



# Creation of ProtectED

- ◆ Three-year research and development process
  - 10 × Focus Groups with university security managers & police
  - National survey of University security managers & police
  - 5 × Focus groups with Students' Union student welfare officers
  - National survey with NUS of UK students – **800 respondents**

Student safety, security and wellbeing



# Creation of ProtectED

- ◆ Three-year research and development process
- ◆ ProtectED Advisory Board
  - 14 member organisations
  - Advise on ProtectED development and review materials



# Creation of ProtectED

- ◆ Three-year research and development process
- ◆ ProtectED Advisory Board
- ◆ Development of first **ProtectED Code of Practice**
  - Documentation and assessment process



# ProtectED approach

- ◆ Student-centred, holistic and preventative
- ◆ Considers safety and wellbeing beyond the campus
- ◆ Builds on existing best practice, processes and approaches
  - Security Industry Authority 'Approved Contractor Scheme'
- ◆ Emphasis on partnership working
  - Student safety, security & wellbeing requires joined-up thinking between different services, departments and organisations



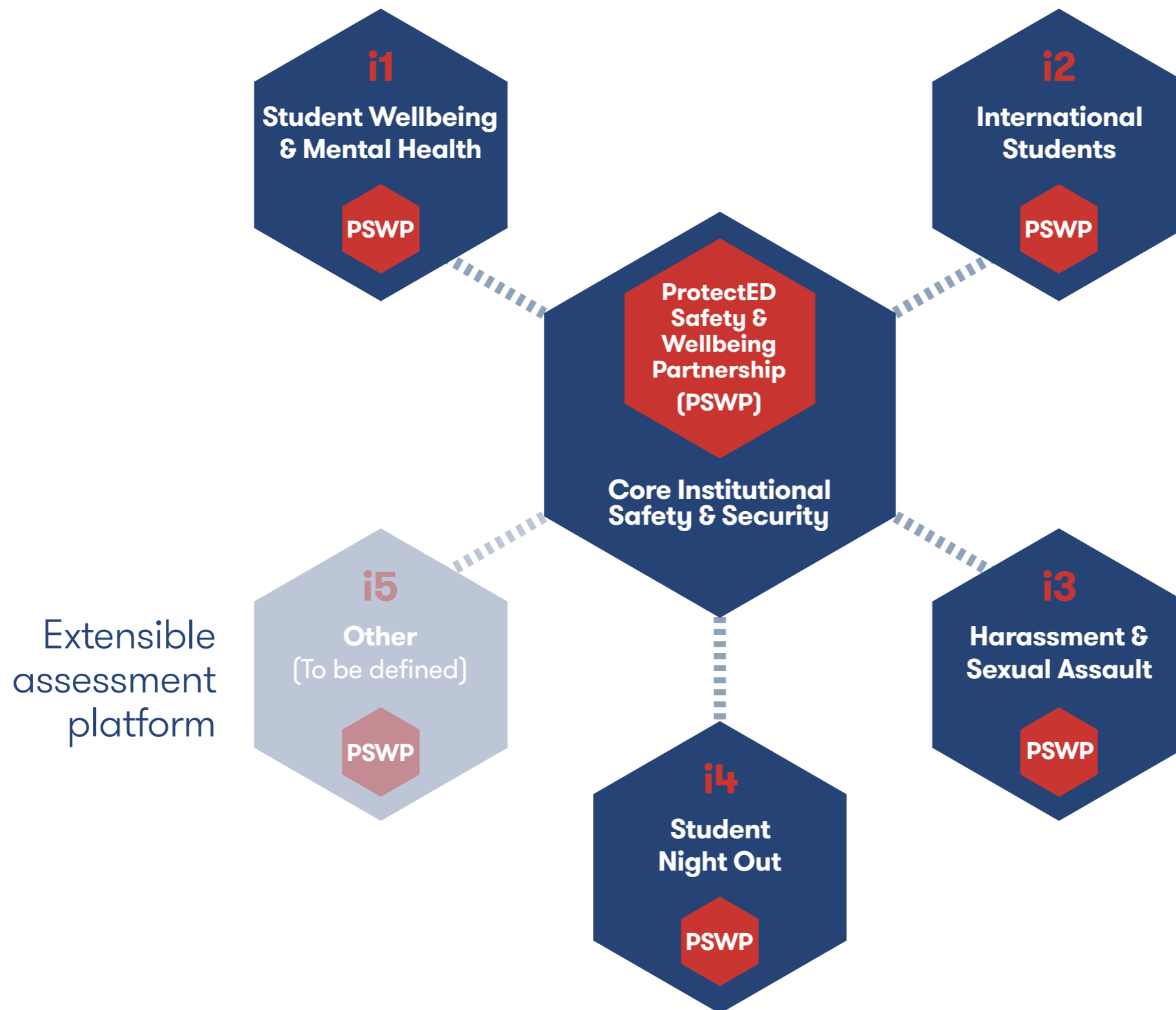
# Code of practice: Structure

- ◆ Emphasis on partnership working
  - Student safety, security & wellbeing requires joined-up thinking between different services, departments and organisations

# Code of practice: Structure

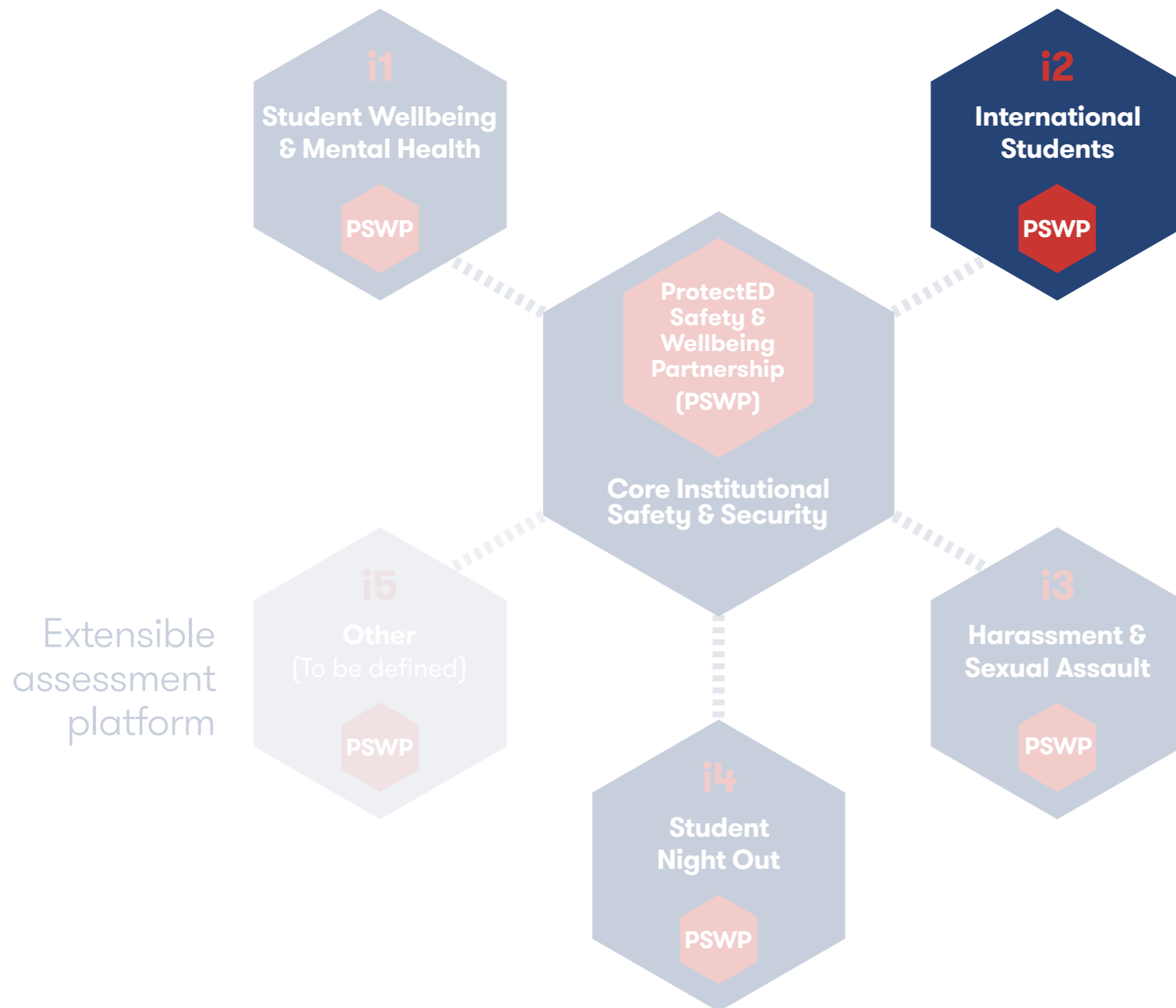
**ProtectED  
Safety &  
Wellbeing  
Partnership  
(PSWP)**

# Code of practice: Structure





# Code of practice: International Students



# International Students

## ◆ The issue

- ◆ The issue

NEWS THE PIE REVIEW THE PIE JOBS THE PIE TALENT THE PIE

## THE PIE NEWS

News and business analysis for Professionals in International Education

NEWS ANALYSIS CHAT GALLERY JOBS

You are here: [Home](#) » [News](#) » Mental health concerns for 35% int'l students

### Mental health concerns for 35% int'l students

Posted on Jan 23, 2018 by Patrick Attack

Posted in [News](#), [Research](#), under [Europe](#).

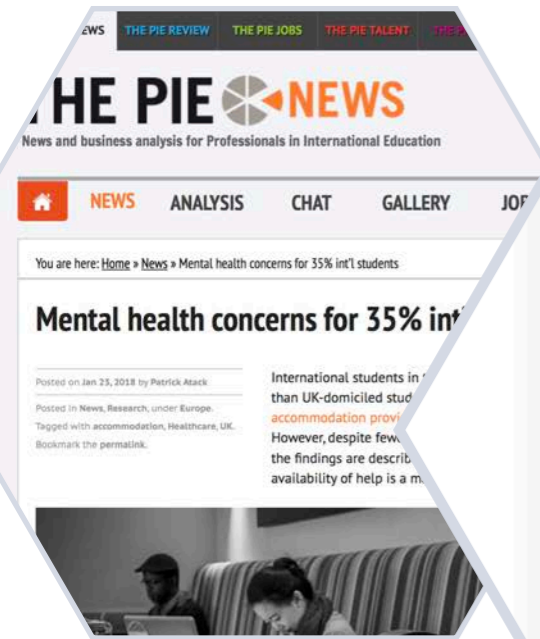
Tagged with [accommodation](#), [Healthcare](#), [UK](#).

Bookmark the [permalink](#).

International students in the UK report fewer issues with mental health than UK-domiciled students, according to [research carried out by accommodation provider Campus Living Villages and the University of Salford](#). However, despite fewer visiting students reporting mental health issues, the findings are described as “concerning”. The lack of availability of help is a major worry, according to the research.

# International Students

## ◆ The issue



# International Students

◆ The issue **Business analysis for Professionals in International Education**

## THE PIE NEWS

NEWS ANALYSIS CHAT GALLERY JOBS BLOG

You are here: [Home](#) » [News](#) » 'Safety first' say international students – Intead/FPP study

### 'Safety first' say international students – Intead/FPP study

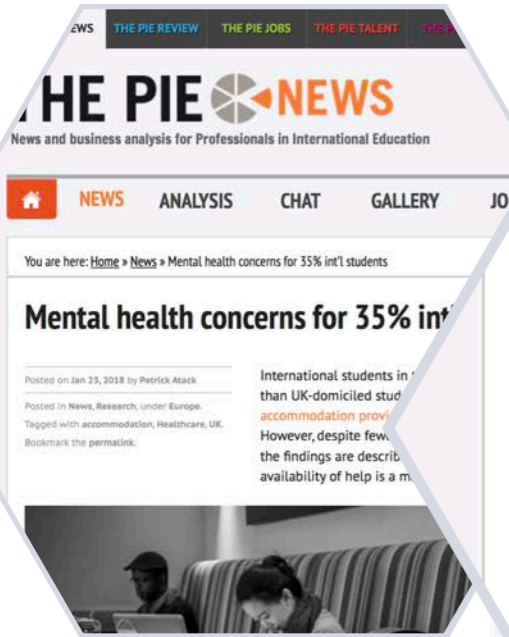
Posted on Jan 18, 2018 by Claudia Civinini

A major jump in students flagging up safety concerns as influencing their study abroad decisions has been noted in a [new report](#) by Intead and FPP EDU Media.

Posted in News, Research, under North America.

Tagged with #youarewelcomehere, student recruitment, Universities.

Bookmark the [permalink](#).



- ◆ Survey of **1.7 million** prospective students
- ◆ **57,471** responses from 65 countries
- ◆ 29 countries with over 100 respondents

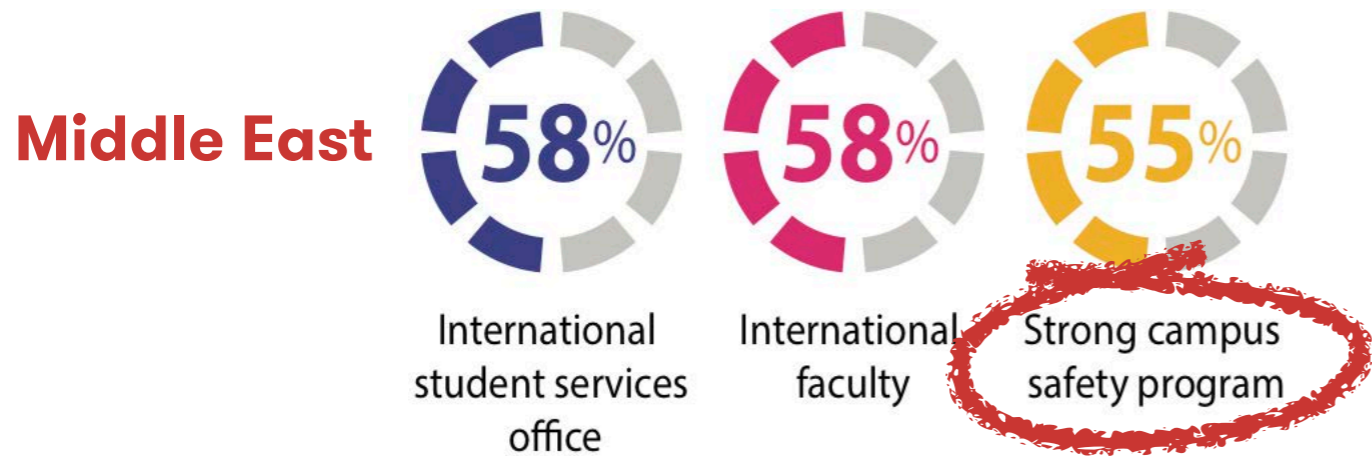
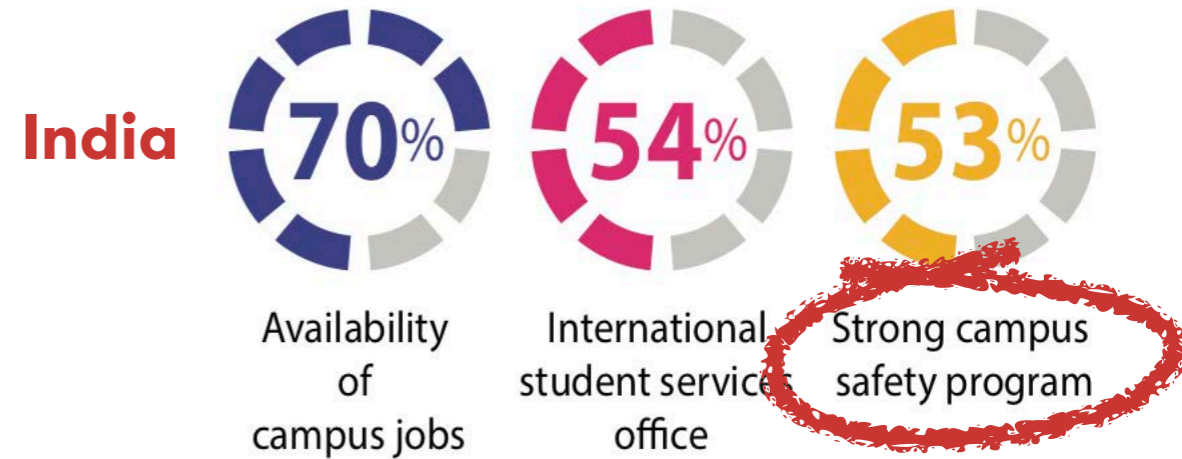
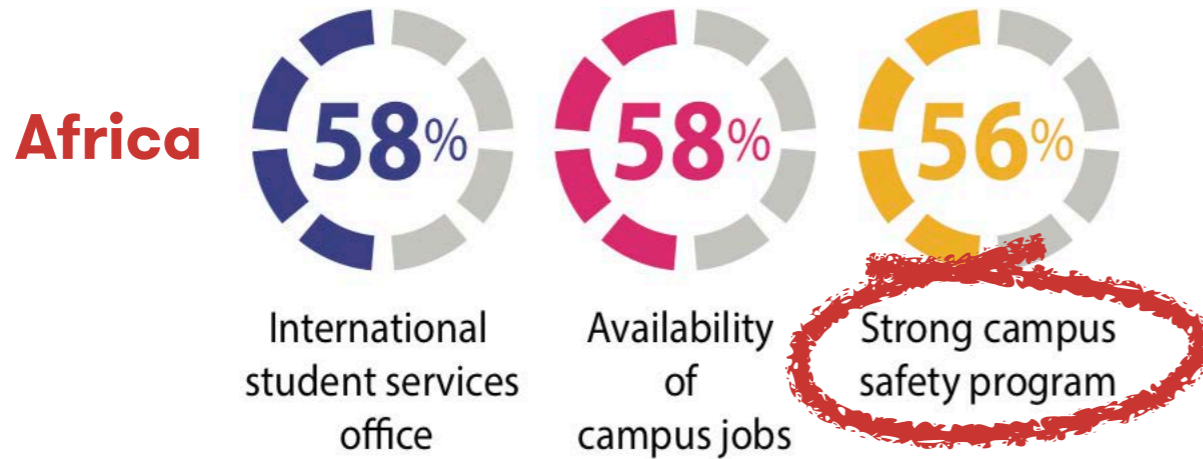


- ◆ 50% of respondents indicated a strong campus safety program was “**very important**” in making their selection

“In our previous research, students have often cited safety as a factor in selection. However, this newest survey data reveals safety to be an **increasingly dominant concern.**”

FPP EDU Media (2017) “*Know Your Neighbourhood – Fall 2017*”, p. 16.

◆ Top 3 factors rated **“Very Helpful”** in choosing a University





## ◆ The issue

Strategy

Marketing

Research

Categories

## International student survey reveals new opportunities for competitive differentiation

15 May 2018

*Short on time? Here are the highlights:*

- *A new global survey reinforces the importance of career outcomes in the der prospective international students*
- *The students' responses highlight as well that a majority carefully weigh including costs of study, availability of scholarships, and work opportun among institutions and study destinations*



with annual iteration of a massive global study conducted am shows once again that students are thinking about their the 2018 QS Enrolment Solutions International Stud



- ◆ July 2018 report
- ◆ UNESCO Institute of Statistics data on incoming international students

## The UK in the global student market: second place for how much longer?

Simon Marginson

19 July 2018

### ■ Introduction

Until recently, the UK was the second most popular destination globally for international students. However, there has been little growth in the number of international students entering the UK since 2012. Recent data show that the gap between the UK and other countries is shrinking and the UK may soon fall to third place.

### ■ Overall position: the top 10 export nations

The most recent UNESCO Institute of Statistics data on incoming international students are for 2016, although the UK data stop at 2015. Table 1 lists the 10 leading countries, in incoming international tertiary students, between 2011 and 2016. The table shows that the UK retained second place at world level in 2015, after the United States. The rate of growth in 2011-15 was more rapid in the US than the UK due to the Obama Government's open-door policy. In 2011-15 the numbers entering the US rose by 198,000 (an increase of 27.9 per cent), while the UK numbers rose by 11,000 (an increase of 2.6 per cent).

At world level 80 per cent of all tertiary students are in degree programmes, nearly all of them in universities, although the ratio varies by country. Among international students the proportion studying for degrees is higher than it is for all students.

◆ Incoming international students from all parts of the world, 2013–16

	2013	2014	2015	2016
<b>US</b>	784,427	842,384 <b>7.4%</b>	907,251 <b>7.7%</b>	—
<b>Canada</b>	151,244	164,274 <b>8.6%</b>	171,603 <b>4.5%</b>	189,573 <b>10.5%</b>
<b>Australia</b>	249,868	266,048 <b>6.5%</b>	294,438 <b>10.7%</b>	335,512 <b>13.9%</b>
<b>UK</b>	416,693	428,724 <b>2.9%</b>	430,687 <b>0.5%</b>	—

Adapted from: S. Marginson (2018) "The UK in the global student market" CGHE

◆ Incoming international students from *rest of the world* (the world minus Europe), 2013–16

	2013	2014		2015		2016	
<b>US</b>	714,630	771,561	<b>8.0%</b>	840,757	<b>9.0%</b>	—	
<b>Canada</b>	132,558	142,863	<b>7.8%</b>	148,458	<b>3.9%</b>	164,262	<b>10.6%</b>
<b>Australia</b>	239,031	255,525	<b>6.9%</b>	283,043	<b>10.8%</b>	321,352	<b>13.5%</b>
<b>UK</b>	288,766	289,514	<b>0.3%</b>	301,558	<b>4.2%</b>	—	

Adapted from: S. Marginson (2018) "The UK in the global student market" CGHE

◆ **UK no longer the unchallenged number two country after the United States**

**“It looks certain that Australia has now gone well past the UK in its numbers of international students from outside Europe, and this will be confirmed when the UNESCO data for 2016, 2017 and then 2018 become available.”**

**“In terms of total international student numbers in tertiary education, Australia may have surpassed the UK in 2018, and if not will almost certainly do so in 2019. The UK will be number three.”**

S. Marginson (2018) *“The UK in the global student market”* CGHE: London, p. 6.

## ◆ The issue

NEWS

ANALYSIS

CHAT

GALLERY

JOBS

You are here: [Home](#) » [News](#) » [US: Top int'l student universities listed](#)

## US: Top int'l student universities listed

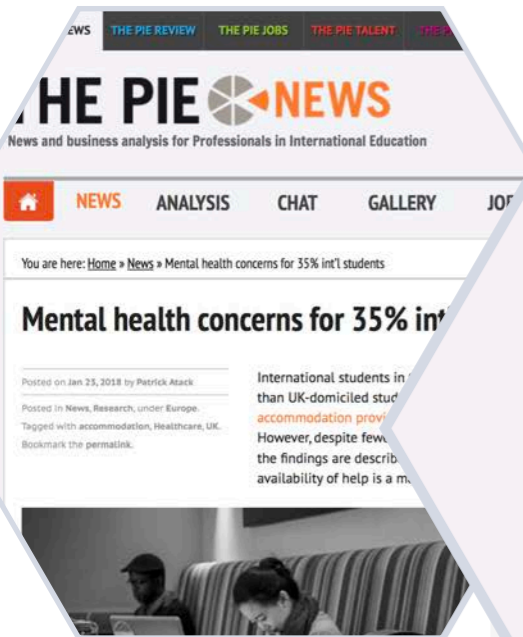
Posted on May 31, 2018 by Kerrie Kennedy

Posted in [News](#), [Research](#), under [North America](#).

Tagged with [US News and World Report](#).

Bookmark the [permalink](#).

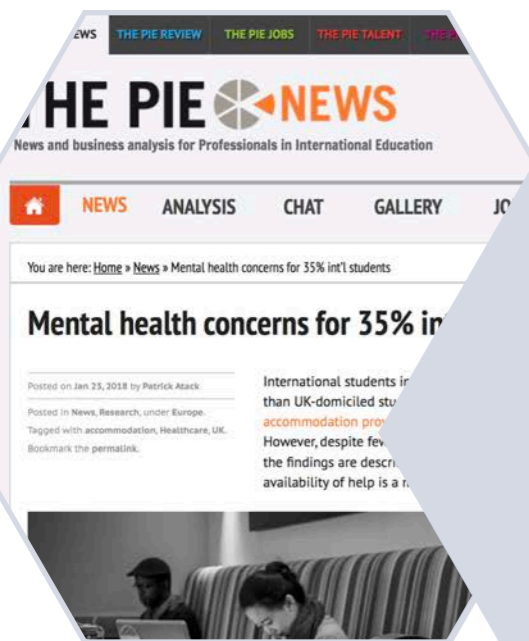
A list of the top US universities offering resources to help students adapt to and graduate from schools in the country released by US News & World Report.



## ● The issue

“ A lot of our international students come from non-EU countries, but even if you’re in an EU country, overwhelmingly you won’t have a chance to visit the campus before you get there. So everything that you’re going to hear about in terms of safety and stuff, you look up yourself online. ”

(NUS ProtectED Focus Group)



# International Students

## ◆ The issue

**THE PIE NEWS**  
News and business analysis for Professionals in International Education

NEWS ANALYSIS CHAT GALLERY JOBS

You are here: Home » News » Mental health concerns for 35% int'l students

### Mental health concerns for 35% int'l students

International students in the UK report fewer issues with their mental health than UK-domiciled students, according to research carried out by accommodation provider Campus Living Villages and the University of Salford. However, despite fewer visiting students reporting mental health issues, the findings are described as "concerning". The lack of support and availability of help is a major worry, according to the research.

**the guardian**

### I wasn't prepared for the culture shock of being an international student

Students The global student

I thought student life in the UK would be much the same as in the Netherlands. But small things began to catch me off balance...

**PIE NEWS**  
Business analysis for Professionals in International Education

NEWS ANALYSIS CHAT GALLERY JOBS BLOG

### 'Safety first' say international students - Intead/FPP study

A major jump in students flagging up safety concerns as influencing their study abroad decisions has been noted in a new report by Intead and FPP EDU Media.

“ A lot of our international students come from non-EU countries, but even if you're in an EU country, overwhelmingly you won't have a chance to visit the campus before you get there. So everything that you're going to hear about in terms of safety and stuff, you look up yourself online. ”

(NUS ProtectED Focus Group)

**ICEF Monitor**

Strategy Marketing Research Categories

### International student survey reveals new opportunities for competitive differentiation

15 May 2018

Short on time? Here are the highlights:

- A new global survey reinforces the importance of career outcomes in the development of prospective international students
- The students' responses highlight as well that a majority carefully weigh including costs of study, availability of scholarships, and work opportunities among institutions and study destinations

### US: Top int'l student universities listed

A list of the top US universities offering resources to help students adapt to and graduate from schools in the country released by US News & World Report.





# International Student Buyer Behaviour Research 2018



# IDP student perceptions



Australia



Canada



NZ



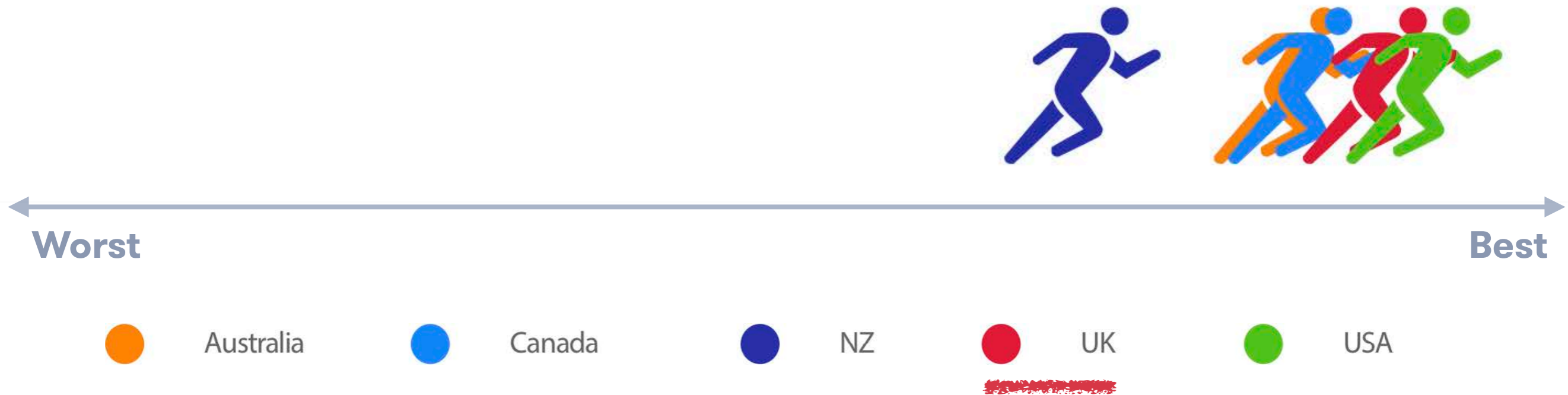
UK



USA

# IDP student perceptions

◆ Quality of education



IDP International Student Buyer Behaviour Research 2018

# IDP student perceptions

◆ Affordability



Worst

Best



Australia



Canada



NZ



UK

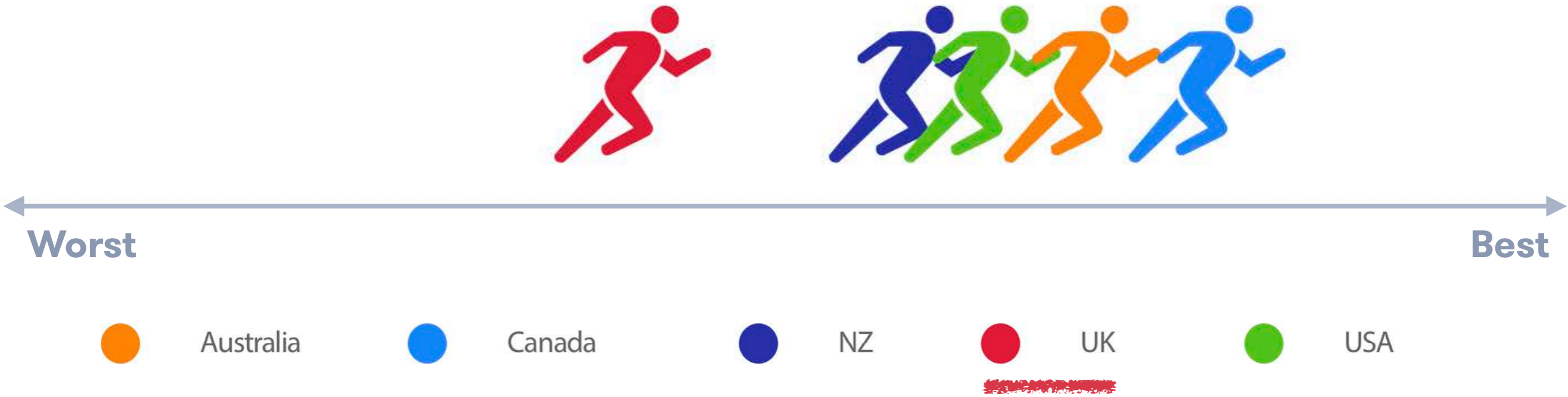


USA

IDP International Student Buyer Behaviour Research 2018

# IDP student perceptions

◆ Graduate employment opportunities



IDP International Student Buyer Behaviour Research 2018

# IDP student perceptions

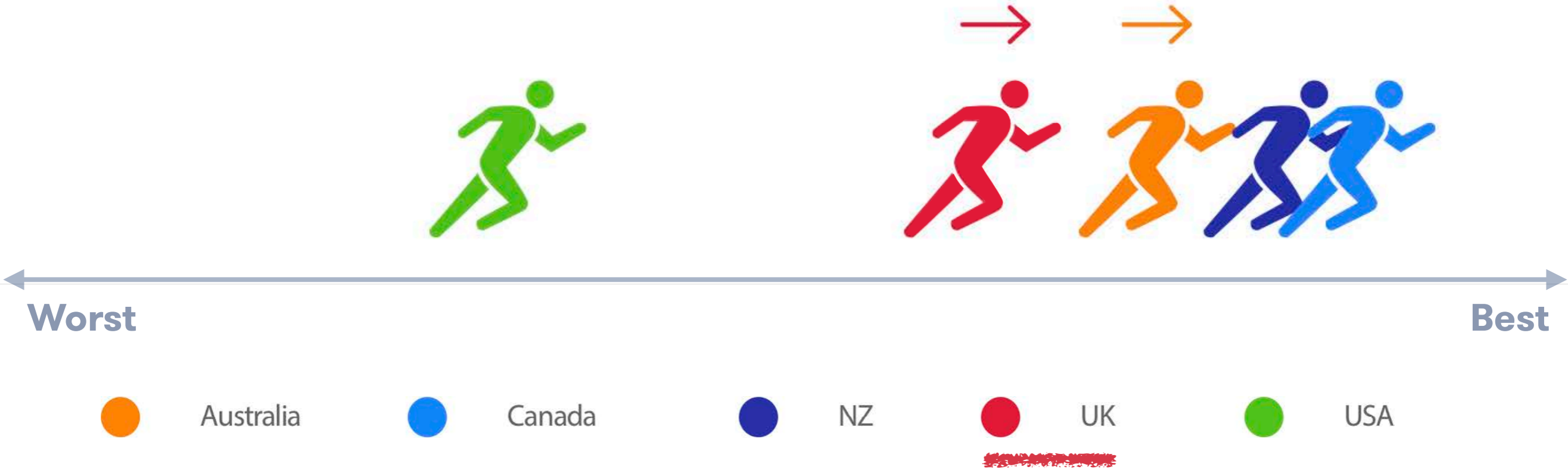
◆ Visa requirements



IDP International Student Buyer Behaviour Research 2018

# IDP student perceptions

◆ Safety



IDP International Student Buyer Behaviour Research 2018



## ◆ Key take away

**“Despite the magnitude of information available online, students still seek advice from a trusted source when making life-changing decisions such as studying overseas.”**





## ◆ Key take away

“Despite the magnitude of information available online, students still seek advice from a **trusted source** when making life-changing decisions such as studying overseas.”

**Protect**  **ED**<sup>TM</sup>  
Accredited Institution

# ProtectED 'International Students' instrument

## Instrument structure



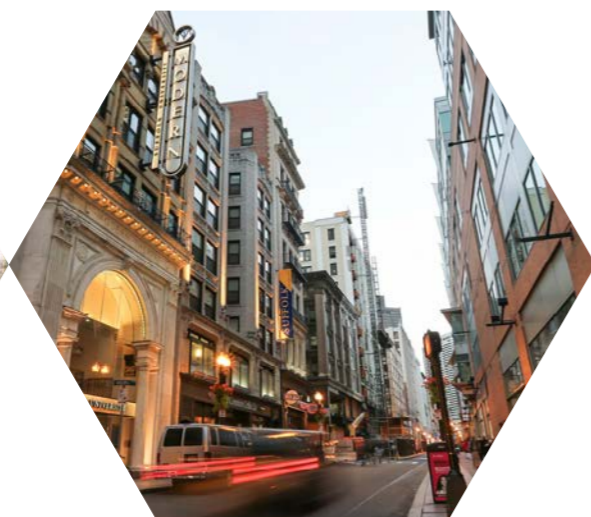
# Section 1: International Student Recruitment & Students' Selection of University

- 1.1** The university can demonstrate that it provides information on its international student recruitment webpages about the institution's safety, security and wellbeing services
- The HEI's international student recruitment webpages clearly communicate its safety, security and wellbeing services relating to students
  - Information on the HEI's safety, security and wellbeing services is written in an accessible, student-facing way



# Section 1: International Student Recruitment & Students' Selection of University

- 1.2** The university can demonstrate that it provides evidence-based and impartial information about its location on the institution's international student recruitment webpages
- The university's international student recruitment webpages clearly communicate the university's geographical, cultural and historical context (i.e. urban, suburban or rural campus etc.)
  - Information on the university's geographical context is written in an accessible, student-facing way



## Section 2: Pre-Arrival to the UK

**2.2.1** Prior to their arrival in the UK, international students are informed and aware of travel, academic registration, accommodation, opening a bank account, visa and immigration, and police registration

The HEI provides international students with the below information prior to their arrival in the UK, leaving enough time for the student to act upon it:

- Travel information to the university from possible arrival points (airport, train / bus station, port), including if the HEI welcomes students at airports / stations



## Section 2: Pre-Arrival to the UK

- 2.2.1**
- Travel information to the university from possible arrival points (airport, train / bus station, port), including if the HEI welcomes students at airports / stations
  - The university's academic registration process
  - 'International Student Orientation Week'
  - Information on allocating university accommodation, along with a 'white list' of accredited private landlords for international students, and information on the 'Right to Rent' scheme
  - British Council "*First steps: A pre-departure guide for international students coming to the UK*"
  - UK Student Immigration and Visa requirements, and the assistance available from the HEI

## Section 2: Pre-Arrival to the UK

- 2.2.1**
- ‘International Student Orientation Week’
  - Information on allocating university accommodation, along with a ‘white list’ of accredited private landlords for international students, and information on the ‘Right to Rent’ scheme
  - British Council “*First steps: A pre-departure guide for international students coming to the UK*”
  - UK Student Immigration and Visa requirements, and the assistance available from the HEI
  - Relevant international students should be informed that they need to register with the police, the process (e.g. documents required), where to register, and any assistance available from the university

- ◆ **University of Nottingham “Pre-departure checklist”**
  - Checklist is found on the university’s International Student pages, and offers clear, step-by-step advice for students travelling to the institution
  - Divided into sections: Before you leave...; Pack your suitcase; Carry in your hand luggage; and useful links — including “*Tips for your first few days*”, written by university’s support team
  - Each section accompanied by video advice and blogs written and produced by current international students



<https://www.nottingham.ac.uk/studywithus/international-applicants/application-process/offerholders/preparation-arrival/pre-departure.aspx>



# Section 2: Pre-Arrival to the UK

# CASE STUDY



Study Rese  
University of Not  
checklist  
Pre-dep  
v with us  
rses  
with us?

Before you lea  
Before you leave  
country to stud  
international

## Section 2: Pre-Arrival to the UK

**2.2.2** The HEI provides international students with a list of accredited education agents or consultant

- The HEI has a list of accredited education agents or consultants, and this information is communicated to international students



- ◆ **University of Salford's Education Consultants**
  - The university has a list of approved education consultants in 32 countries — all are trained and paid for by the university
  - Education consultants can provide education counselling services to international students, including information on course selection, completing application forms, and the Manchester and Salford area
  - This information is displayed on dedicated *International Student* pages on the University website.



<http://www.salford.ac.uk/international/education-consultants>

## Section 3: Arrival

**3.1.1** The HEI enables safe travel of international students from their point of arrival in the UK, to the university or accommodation



- ◆ **Aston University's 'Meet and Greet' service**
  - Aston University provide a free 'meet and greet' service for new students arriving to Birmingham International Airport during Welcome Week
  - Students are met by 'Aston Aunties' — current Aston students who volunteer to help new students settle in to university life
  - Aston Aunties can be clearly identified by their brightly coloured tops, and they assist new students to board a coach that takes them to the University campus

<http://www.aston.ac.uk/new-student/international-students/meet-and-greet>



Sec

BY

V

nts/



## Section 3: Arrival

### 3.4.1 The HEI facilitates new international students opening a UK bank account



- ◆ **Oxford University 'Meet the Banks'**
  - Oxford University invites representatives from all Oxford-based banks to meet new students during Orientation Week
  - The banks provide information on opening a bank account, and can start the process on the day
  - Students are informed of the event in advance and told what documents they need to bring
  - The 'Meet the Banks' event runs on three different days to ensure that as many students can attend as possible





# Section 3: Arrival

- ◆ Oxford
- Oxford banks
- The banks can start
- Student documents
- The 'Meet' ensure the

# CASE STUDY

from all Oxford-based  
Orientation Week  
a bank account, and  
once and told what  
different days to  
possible

## Opening a Bank Account: a guide for European and International Students

### Tips and practical advice about how to open an account

This guide contains information about what type of documents you will need to open a bank account and the services the main banks in Oxford provide.



#### Still having problems?

If you have any difficulties opening a bank account, please talk to the Customer Services department at the Bank first, and then if you still have problems let your College and Student Information know [student.information@admin.ox.ac.uk](mailto:student.information@admin.ox.ac.uk)

If you wish to make a complaint about a bank write to: The Financial Ombudsman Service South Quay Plaza, 183 Marsh Wall, London, E14 9SR Tel: 0800 0234567  
[complaint.info@financial-ombudsman.org.uk](mailto:complaint.info@financial-ombudsman.org.uk)  
<http://www.financial-ombudsman.org.uk>

### Three useful tips for bank accounts

UK banks are keen to open accounts for European and International Students. However, as they need to collect certain information from you to meet UK government financial rules the process of opening a bank account can sometimes take a few days or longer. Follow these three useful tips to make the process easier:

**1. Meet all the banks at the Orientation Programme:** where they can provide information and start the process to open your account. Remember to bring all your documents (see page 5).

Graduate Orientation is held on 1st and 2nd October and Undergraduate and Visiting Orientation on 5th October. Graduate students who miss the orientation events on 1st and 2nd October can also meet the banks on 5th October from 10am to 12pm.

**2. Gather all the documents needed to open an account:** For all the banks listed in the table on page 5 of this document (except HSBC) you will need your passport or EU identify card and a stamped copy of your 'enrolment certificate' to verify your student and course status but it **must** have your **complete student address and postcode** and have been stamped by the college. See page 3 for how to obtain this certificate.

For HSBC see page 5 for additional documents required.

**3. Go to the bank early:** The banks will be very busy at the start of term. Try to avoid lunchtimes which are very busy periods and see the 'late bank opening hours' on next page. Most banks should open your account the same day but cards may take around five days to one week to arrive in the post.

Talk to your college if you are waiting for your account to be opened and they may extend the deadline for paying your bills.

Guide prepared by Student Information, correct as of September 2015 [✉ student.information@admin.ox.ac.uk](mailto:student.information@admin.ox.ac.uk)

> Late bank opening hours - page 2

> Standard bank opening hours - page 2

> Services the banks provide - page 2

> How to obtain the student enrolment certificate - Page 3

> Common terms about UK bank accounts - page 3

> Map of bank locations - page 4

> Comparison of Oxford banks - page 5 and 6



# Section 4: International Student Orientation

**4.1.1** The HEI provides an International Student Orientation programme that gives practical advice on living in the UK



- ◆ **University of Sheffield ‘Orientation Programme’**
  - Week-long course to help international students manage the challenges of moving to a new country
  - Multiple activities, including:
    - *Guided tours of the University campus and local area*
    - *Workshops (‘Managing finances’; ‘Understanding British culture’)*
    - *Social events, such as film and quiz nights*
  - Support staff also deliver talk on student wellbeing and mental health services



## Section 4: International Student Orientation

## CASE STUDY

- ◆ **University of Sheffield ‘Orientation Programme’**
  - Important information sessions take place at multiple times throughout the week
    - *So students arriving on different days so not miss out*
  - Students must pay a registration fee of £5 to attend Orientation Week, and must book a place in advance



<https://www.sheffield.ac.uk/ssid/newstudents/orientation-week>

# Section 4: International Student Orientation

# CASE STUDY



[week](#)



## Section 4: International Student Orientation

**4.1.4** The HEI provides an International Student Orientation programme that includes a local police introduction



## Section 4: International Student Orientation

## CASE STUDY

- ◆ **Plymouth University** ‘International Student Orientation Programme’
  - Week-long Orientation Programme for international students every September
  - Members of the local police team attend the University campus on two days
    - *Offer advice to students who need to register with the police*
  - Also an opportunity to meet the University’s dedicated Police Liaison Officer during a safety talk



[https://www.plymouth.ac.uk/uploads/production/document/path/11/11204/ISOP\\_Handbook\\_final.pdf](https://www.plymouth.ac.uk/uploads/production/document/path/11/11204/ISOP_Handbook_final.pdf)

## Section 4: International Student Orientation

## CASE STUDY

- ◆ **Plymouth University** ‘International Student Orientation Programme’
  - For those unable to attend, Sarah Pengelly — Police Liaison Officer for Plymouth University — introduces herself in a short video
    - *Provides details of how she can be contacted*



[https://www.plymouth.ac.uk/uploads/production/document/path/11/11204/ISOP\\_Handbook\\_final.pdf](https://www.plymouth.ac.uk/uploads/production/document/path/11/11204/ISOP_Handbook_final.pdf)





**Sarah Pengelly**  
**Police Liaison Officer**



## Section 5: During Study

**5.1.1** The HEI ensures that there are adequate provisions for international students during holiday periods



## Section 5: During Study

## CASE STUDY

- ◆ **Keele University 'Christmas at Keele'**
  - Student Services team have created a 'Christmas at Keele' leaflet for students remaining on campus over the Christmas break
  - Programme of activities that students can get involved in, helping to combat loneliness and isolation
    - *Activities includes: pizza night, shopping trips, and a Christmas Eve meal*





# Christmas vacation events

1st December 2016 - 8th January 2017

MONDAY	TUESDAY	WEDNESDAY	THURSDAY	FRIDAY	SATURDAY	SUNDAY
			DEC 01	02 FOOTBALL TOURNAMENT	03 KPA GOES TO... BIRMINGHAM CHRISTMAS MARKET!	04 HAWTHORNS' PUB QUIZ
05 CHRISTMAS LIGHTS SWITCH ON AT KEELE SU	06 CHRISTMAS MARKET AT KEELE SU - WINTER SOCIETY SHOWCASE	07	08	09 KPA CHRISTMAS PARTY!	10 GIVE IT A GO TRIP TO BIRMINGHAM CHRISTMAS MARKETS	11 HAWTHORNS' PUB QUIZ - KPA KID'S CHRISTMAS PARTY
12	13 KPA CHRISTMAS QUIZ	14 UNIVERSITY CAROL SERVICE	15	16 FOOTBALL TOURNAMENT	17 KPA CHARITY GIG	18 HAWTHORNS' PUB QUIZ
19 XMAS ACOUSTIC EVENING!	20 KPA CHRISTMAS QUIZ	21 CAROL SINGING/ROCK & ROLL CAROLS!	22 XMAS MOVIE NIGHT!	23 CHRISTMAS LUNCH - FISHY DISCO	24 CHRISTMAS EVE	25 <i>Merry Christmas!</i> CHRISTMAS DAY
26 BOXING DAY	27 THE BIG FAT 2016 QUIZ! BANK HOLIDAY	28 GLOBAL CAFÉ LUNCH	29 TRAFFORD CENTRE TRIP	30	31 FISHY DISCO NEW YEARS EVE	<i>Happy New Year</i> NEW YEARS DAY!
02 BANK HOLIDAY	03	04 SPORTS & PIZZA EVENING	05	06	07	08 GET READY FOR 2ND SEMESTER!

**EVENT INFORMATION**

**2ND DECEMBER AND 16TH DECEMBER: FOOTBALL TOURNAMENT**  
MUGA, Sports Centre, 6-8pm.

**SATURDAY 3RD DECEMBER: KPA GOES TO... BIRMINGHAM CHRISTMAS MARKET!**  
Join the KPA and fellow postgraduates on a festive trip to the Birmingham Christmas Market! Follow KPA on Facebook/Twitter for more info.

**6TH DECEMBER: WINTER SOCIETY SHOWCASE**  
At 7pm (KeeleSU).

**FRIDAY 9TH DECEMBER: KPA CHRISTMAS PARTY!**  
7pm til Late - Rock into Christmas with a festive filled night at the KPA Clubhouse!

**10TH DECEMBER: GIVE IT A GO TRIP TO BIRMINGHAM CHRISTMAS MARKETS**  
Depart from Horwood Car Park at 10am. Tickets can be purchased online at the KeeleSU Give It A Go web page.

**SUNDAY 11TH DECEMBER: KID'S CHRISTMAS PARTY!**  
3pm - 5pm - Come to the KPA Clubhouse for a festive party for all the kids. With festive games, activities and maybe even a visit from someone special...

**13TH & 20TH DECEMBER: KPA CHRISTMAS QUIZ - BUMPER FESTIVE EDITION!**  
8:30pm - Get those festive brain cells in gear as the famous KPA Quiz goes festive with a Christmas special!

**14TH DECEMBER: UNIVERSITY CAROL SERVICE**  
Spread the festive cheer and join us for the University Carol Service in the Chapel at 5.15pm.

**SATURDAY 17TH DECEMBER: KPA CHARITY GIG**  
From 7pm for Douglas MacMillan.

**MONDAY 19TH DECEMBER: XMAS ACOUSTIC EVENING!**  
Come down, plug in and perform! 7pm - Late in the KPA Clubhouse.

**WEDNESDAY 21ST DECEMBER: CAROL SINGING/ROCK & ROLL CAROLS!**  
7pm - Late in the KPA Clubhouse. Get into the festive spirit with a bit of Christmas musical cheer!

**THURSDAY 22ND DECEMBER: XMAS MOVIE NIGHT!**  
Free popcorn and mince pies! 7pm in the KPA Clubhouse - welcome Christmas with a great Christmas film and some popcorn and mince pies!

**FRIDAY 23RD DECEMBER: CHRISTMAS LUNCH**  
Get together with friends and join us for a FREE Christmas buffet lunch in the iconic Keele Hall. Enjoy a traditional lunch

of delicious food, relax and meet others who are staying on campus over the holidays.

Booking is essential so don't forget to register by Friday 16th December. The link to register will be sent to those staying on campus but the form can also be requested by emailing [student.services@keele.ac.uk](mailto:student.services@keele.ac.uk) See you there!

**FRIDAY 23RD DECEMBER: FISHY DISCO**  
9pm til Close in the KPA Clubhouse! Ugliest Xmas Jumper Competition! Party into the Christmas weekend with a Fishy Disco! Remember to wear your best Xmas Jumper, with a prize going to the ugliest!

**XMAS EVE: CHRISTMAS SONGS ALL DAY!**  
Video game night! Open from 3pm in the KPA Clubhouse! Have a relaxed Christmas Eve with friends and compete with each other on some video games!

**XMAS DAY:** KPA open from 12 til 3 for Xmas Drinks and essentials such as bread, milk, tobacco, etc.

**TUESDAY 27TH DECEMBER: THE BIG FAT 2016 QUIZ!**  
8.30pm - what do you remember of 2016? Test your knowledge at the KPA 2016 Quiz!

**WEDNESDAY 28TH DECEMBER: GLOBAL CAFÉ LUNCH**  
KPA Clubhouse 12-2pm. Join Karen and Chris for a special Christmas Global Café in the KPA Clubhouse. Food is available to purchase from the bar and free tea and coffee will be available in a relaxed and informal atmosphere. We look forward to seeing you there.

**THURSDAY 29TH DECEMBER: TRAFFORD CENTRE TRIP**  
Depart from Horwood Car Park - 9am  
Leave from Manchester - 4pm  
Manchester's Trafford Centre is one of the largest shopping centres in the UK. Home to Europe's largest food court -

The Orient - and around 200 shopping outlets and stores, be prepared for a busy, fun-filled outing! With the whole day to spend there, feel free to explore far and wide and experience what the Trafford Centre has to offer.

Coach tickets are just £5 per person and can be purchased online via the KeeleSU Give It A Go webpage <https://keelesu.com/whatson/giveitago/>. Don't forget your spending money!

**NEW YEARS EVE: FISHY DISCO**  
From 9pm! Free bubbly at midnight! Open from 3pm! See in the New Year with a classic Fishy Disco at the KPA Clubhouse!

**WEDNESDAY 4TH JANUARY: SPORTS AND PIZZA EVENING**  
Sports Centre, 6-8pm. To round off the holiday activities, come along to the Sports Centre for an evening of sports, games and pizza! Bring some friends, enjoy the free food and drink and relax with good company.



## Section 5: During Study

## CASE STUDY

- ◆ **Keele University 'Christmas at Keele'**
  - The leaflet contains important information on holiday opening hours of University catering services, the library and Students' Union, as well as local transport services
  - Also information on the **Stand Alone** charity and the support that they offer to those who are estranged from their family.



## Section 5: During Study

## CASE STUDY

### ◆ Host UK visits

- National charity that enables international students to visit a British family for a day, over a weekend, or during the Christmas period
- Visits are free for students — subject (in some cases) to a small application fee
- Over 80 UK universities currently offer HOST UK visits to their international students
- Institutions pay annual subscription — sliding scale, relating to number of international students



**HOST** UK  
welcoming international students



“For me, the challenges are threefold: making new friends with local students; getting English language support; and above all finding accommodation for the following academic years.”

(HOST ProtectED blog)



**HOST**  
welcoming international



“I really wanted to pay a visit to a British family because I would love to immerse myself in British culture by knowing local people. After all, hopefully, I will be studying in the UK for at least three years — it would be great for me to know more about the country.”

(HOST ProtectED blog)



**HOST**  
welcoming international





“On the day of my first visit, Peter, one of my host family members, picked me up and drove me home. It made me feel like being with my own family. I had so much fun with their lovely dog, Stanley, when we had a walk around their local area. Maddy and Peter are a really cool and lovely couple. We talked a lot about family and, of course, my international student's life. They made me feel so welcome because they acted so naturally...”

(HOST ProtectED blog)

**HOST**  
welcoming international



# Code of practice: Content



# Code of practice: Content

## 7. People

7.1 The HEI has a defined and implemented recruitment policy for staff engaged in security activity.		+ 3
REQUIRED LEVEL	+ 2	+ 3
<p>The requirements for each role within the HEI have been defined. These include such information as experience, skills and qualifications required.</p> <p>Private Security Industry Act 2001 licensing requirements are adhered to, including the checking of licences.</p> <p>Staff engaged in security activity must have the legal right to work in the UK.</p> <p>The recruitment policy meets all employment law requirements and defines and conducts screening of staff</p>	<p>↪ All aspects of previous levels, plus:</p> <p>The HEI works to BS 7858 or appropriate industry sector equivalent in relation to its recruitment activities.</p> <p>A drugs and alcohol policy exists which outlines the aims and purpose of the policy, explains who is covered by the policy, and clearly sets out the HEI's rules in relation to drug and alcohol use.</p> <p>The HEI conducts competency testing as part of its recruitment process.</p>	<p>↪ All aspects of previous levels, plus:</p> <p>The HEI holds 3rd party certification from a recognised UKAS certification body for BS7858.</p> <p>Additional background checks with written responses covering ten year's employment history are completed within 16 weeks of commencement of employment.</p> <p>Re-vetting is conducted, where applicable, prior to:</p> <ul style="list-style-type: none"> <li>• Promotion</li> <li>• Transfer to high-risk activity</li> </ul> <p>Competency testing is conducted on a regular basis, in particular for changes in legislation, changes to threats or threat levels, changes to technology or particular changes in role.</p>

## 7. People

7.1 The HEI has a defined and implemented recruitment policy for staff engaged in security activity.

### REQUIRED LEVEL

The requirements for each role within the HEI have been defined. These include such information as experience, skills and qualifications required.

Private Security Industry Act 2001 licensing requirements are adhered to, including the checking of licences.

Staff engaged in security activity must have the legal right to work in the UK.

The recruitment policy meets all employment law requirements and defines and conducts screening of staff

+ 2

↙ All aspects of previous levels, plus:

The HEI works to BS 7858 or appropriate industry sector equivalent in relation to its recruitment activities.

A drugs and alcohol policy exists which outlines the aims and purpose of the policy, explains who is covered by the policy, and clearly sets out the HEI's rules in relation to drug and alcohol use.

The HEI conducts competency testing as part of its recruitment process.

+ 3

↙ All aspects of previous levels, plus:

The HEI holds 3rd party certification from a recognised UKAS certification body for BS7858.

Additional background checks with written responses covering ten year's employment history are completed within 16 weeks of commencement of employment.

Re-vetting is conducted, where applicable, prior to:

- Promotion
- Transfer to high-risk activity

Competency testing is conducted on a regular basis, in particular for changes in legislation, changes to threats or threat levels, changes to technology or particular changes in role.

## 2. Student Harassment & Sexual Assault Awareness Raising and Service Promotion

2.3 Training		
2.3.1 Level 1 training: Whole institutional population		
	+ 2	+ 3
<b>REQUIRED LEVEL</b>	<p>↙ All aspects of previous levels, plus:</p> <p>The HEI or SU run Active Bystander Workshops whereby individuals learn techniques to challenge harassment.</p>	<p>↙ All aspects of previous levels, plus: <i>tbc</i></p>
<p>HEI or SU have created a 'Harassment and Sexual Assault' toolkit to disseminate information about student non-verbal, verbal and sexual harassment, stalking, and violent or sexual assault to the whole institutional population.(NB: Name of the toolkit should be bespoke to the HEI).</p> <p>Examples of what could be included:</p> <ul style="list-style-type: none"> <li>• What constitutes harassment, stalking and assault;</li> <li>• The prevalence in university students;</li> <li>• Your legal rights;</li> <li>• How to respond if you or someone you know is has experienced harassment or sexual assault.</li> </ul>	<p><b>GOOD PRACTICE</b></p> <p><b>NUS Hidden Marks report</b></p> <p>This is supported by recommendation #5 in the NUS (2010) report (p30):</p> <p><i>"equip staff and students to identify and challenge unacceptable behaviour"</i> (p30).</p> <p>NUS (2010) Hidden Marks report finds that female students are "very likely to encounter low-level, everyday forms of harassment in the learning environment, students' unions, and the broader institutional context" as well</p>	

as on nights out (p31).

Examples of unacceptable behaviour include (p31):

- Unwanted or intrusive non-verbal or verbal harassment
- Physical sexual harassment.

## CASE STUDY

### SOAS

As part of staff induction at SOAS, all new employees have to attend Mandatory Diversity and Inclusion training. This training includes information about the the "school's approach to raising awareness of and responding to incidents of sexual violence" (<https://www.soas.ac.uk/equalitydiversity/gender-based-violence/file107475.pdf>).

Further, SOAS "highlight the issue of gender based violence in our mandatory training materials for new staff, and encourage colleague to consider how they can embed it in the school activities" (*ibid*).

## CASE STUDY

### UCL Students' Union Active Bystander Workshops

UCL Students' Union (UCLU) Active bystander workshops "are designed to give UCL students the techniques and the confidence they need to challenge sexual harassment and street harassment. A bystander is someone who observes unacceptable behaviour, an active bystander is someone who chooses to act and challenges that behaviour" (<http://uclu.org/whats-on/general/active-bystander-workshop>).

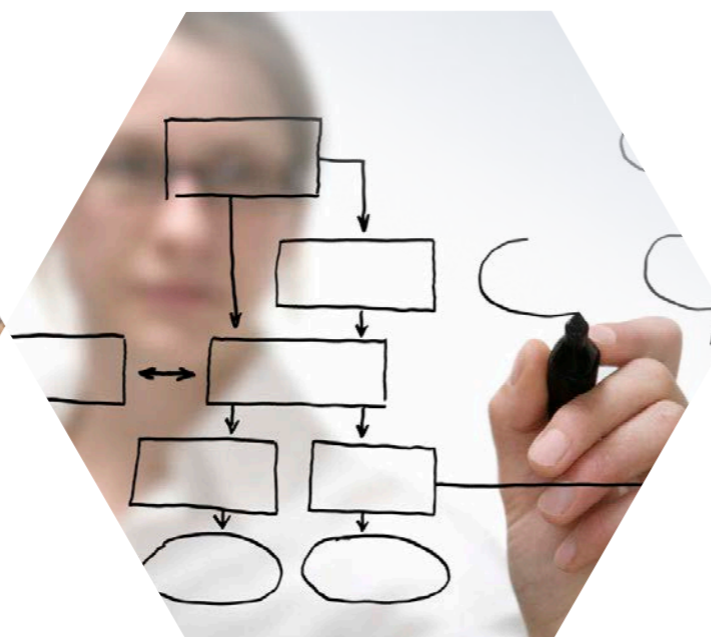
For more information, see <http://uclu.org/sexualharassment>

# ProtectED: Accreditation process

**STAGE 1** **Becoming a ProtectED Member**

**STAGE 2** **Completing the ProtectED Self-Assessment Workbook**

**STAGE 3** **Peer Review Panel and Verification Visit**



# ProtectED: Accreditation process

## STAGE 1

### Becoming a ProtectED Member

- ◆ Letter of Endorsement from Vice Chancellor (or equivalent) of institution
- ◆ Letter confirms acceptance of ProtectED Principles at highest level
  - Confirms commitment to take appropriate action across the organisation
- ◆ Payment of annual Membership Fee



# ProtectED: Accreditation process

## STAGE 2

## Completing the ProtectED Self-Assessment Workbook

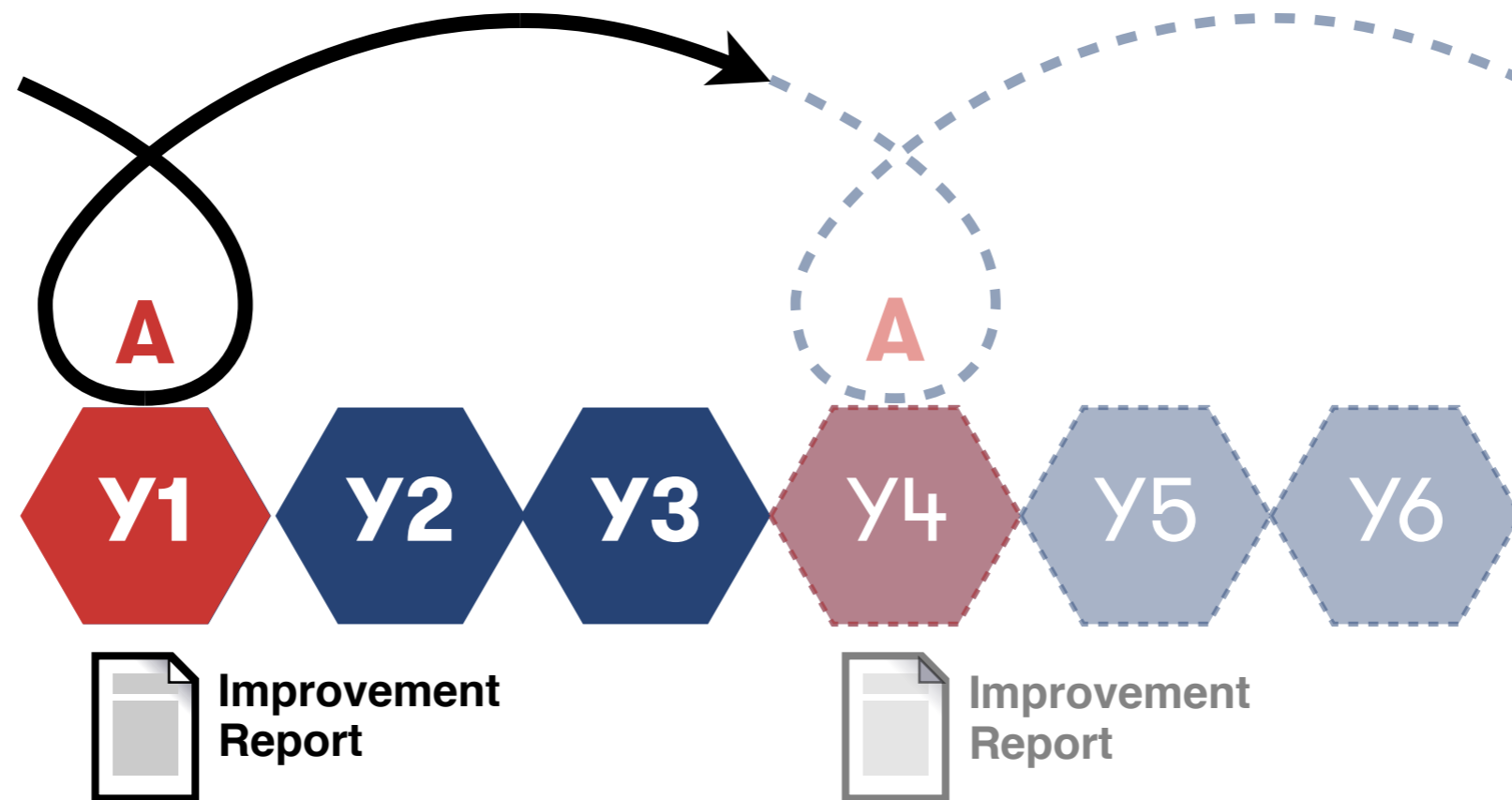
- ◆ **Self-Assessment Workbook** designed to allow institutions to determine whether they meet ProtectED requirements
  - Self-assessment prior to making formal application
  - Supports development of improvement strategies
- ◆ Self-assessment undertaken by team comprising key stakeholders in security and student support services
  - Team would include representation from Students' Union
- ◆ Self-assessment teams forms starting point for **ProtectED Safety & Wellbeing Partnership (PSWP)**
- ◆ Institution submits completed self-assessment when happy to proceed

# ProtectED: Accreditation process

## STAGE 3

## Peer Review Panel and Verification Visit

- Rolling three-year assessment cycle



# ProtectED: Accreditation process

**STAGE 1**

**Becoming a ProtectED Member**

**STAGE 2**

**Completing the ProtectED Self-Assessment Workbook**

**STAGE 3**

**Peer Review Panel and Verification Visit**

- ◆ ProtectED Accreditation process is entirely **confidential**
  - Identities and results of candidate institutions are not disclosed

# ProtectED: Membership benefits

- ◆ Use of ProtectED Member logo



# ProtectED: Membership benefits

- ◆ Use of ProtectED Member logo
- ◆ Access to ProtectED Self-Assessment Guide
  - Plus tools / resources to support self-assessment



# ProtectED: Membership benefits

- ◆ Use of ProtectED Member logo
- ◆ Access to ProtectED Self-Assessment Guide
  - Plus tools / resources to support self-assessment
- ◆ Accreditation process, including Peer Review and Verification Visit
  - ProtectED Approved Assessor and trained Student Assessors
- ◆ Opportunity to share and showcase good practice
  - As 'Good Practice' examples in Code of Practice
  - As case studies on Protect-ED.org website
- ◆ Access to 'members only' resource directory
  - Ambition to become **the** place to find good practice on student safety, security and wellbeing

# ProtectED: Benefits of Membership & Accreditation

- ◆ Following successful accreditation, use of *ProtectED Accredited Institution* mark
  - On letterhead, websites, publications, email signatures, etc.



# ProtectED: Benefits of Membership & Accreditation

- ◆ Following successful accreditation, use of *ProtectED Accredited Institution* mark
  - On letterhead, websites, publications, email signatures, etc.
- ◆ Tailored improvement reports for ProtectED Member institutions
- ◆ ProtectED Annual Conference
  - Welcoming new ProtectED Members, celebrating innovative practice and presenting Accreditation Awards



# ProtectED: Membership benefits

- ◆ **Collection of primary data from ProtectED Member institutions**
  - Anonymised and aggregated data will enable research to support ProtectED Membership
  - Enable improved analysis and understanding of problems
  - Develop improved evidence base for 'what works'
  - Support Members' improved practice and effectiveness
  - Identify Members' training needs and develop solutions
- ◆ **Identify synergies across ProtectED Membership**
  - Foster collaboration and learning
- ◆ **Regular reports for Members based on collective primary research and aggregated data**
  - Highlighting successes and innovative practice

# ProtectED: Membership benefits

- ◆ ProtectED Membership and Accreditation can provide a broad range of benefits



# ProtectED: What's next?

## Are you a 'pioneering institution'?

- ◆ 47 universities have expressed interest to date
- ◆ Seeking twelve **ProtectED Founder Member** institutions
  - ProtectED Evening Reception in March 2018 – House of Lords





ProtectED  
Code of Practice

Raising standards  
and improving the  
student experience

Benefits of ProtectED membership

www.ProtectED.org

ProtectED  
Founder Member

CERTIFICATE  
of Founder Membership

It is to certify that

*University of Salford*

is a certified Founder Member of ProtectED for the year of 2018  
and so shall enjoy the benefits and privileges thereof

*[Signature]*  
The Boroughs Group  
Ratcliffe

*[Signature]*  
Andrew B. Mowbray  
Director



# ProtectED: What's next?

## Are you a 'pioneering institution'?

- ◆ 47 universities have expressed interest to date
- ◆ Seeking twelve **ProtectED Founder Member** institutions
  - ProtectED Evening Reception in March 2018 – House of Lords
  - New Founder Member institutions
  - Four institutions in the process of taking up Founder Membership
  - Next ProtectED House of Lords event in January 2019



# ProtectED: A final thought...

- ◆ How might an institution's lack of action appear?

**Grey's Law...**



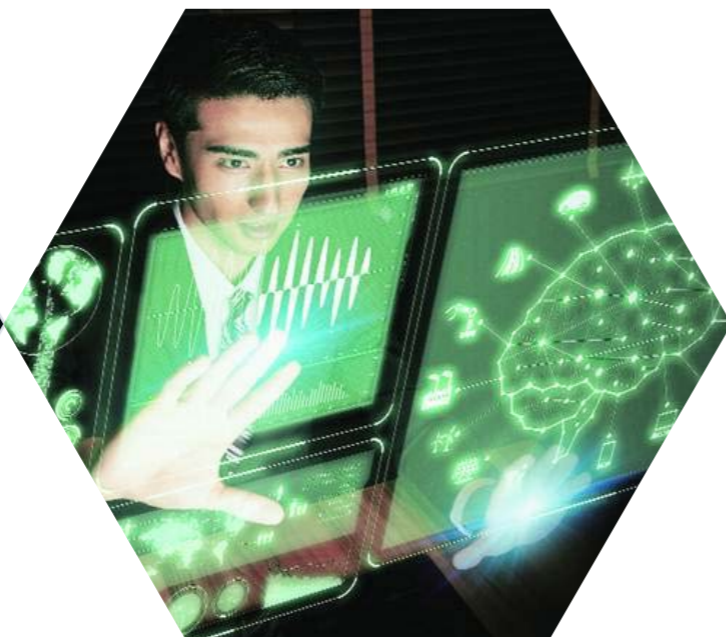
# ProtectED: A final thought...

- ◆ How might an institution's lack of action appear?

Grey's Law

Arthur C Clarke's Third Law

“Any sufficiently advanced technology is indistinguishable from magic.”





# ProtectED: A final thought...

- ◆ How might an institution's lack of action appear?

## Grey's Law

**“Any sufficiently advanced incompetence is indistinguishable from malice.”**

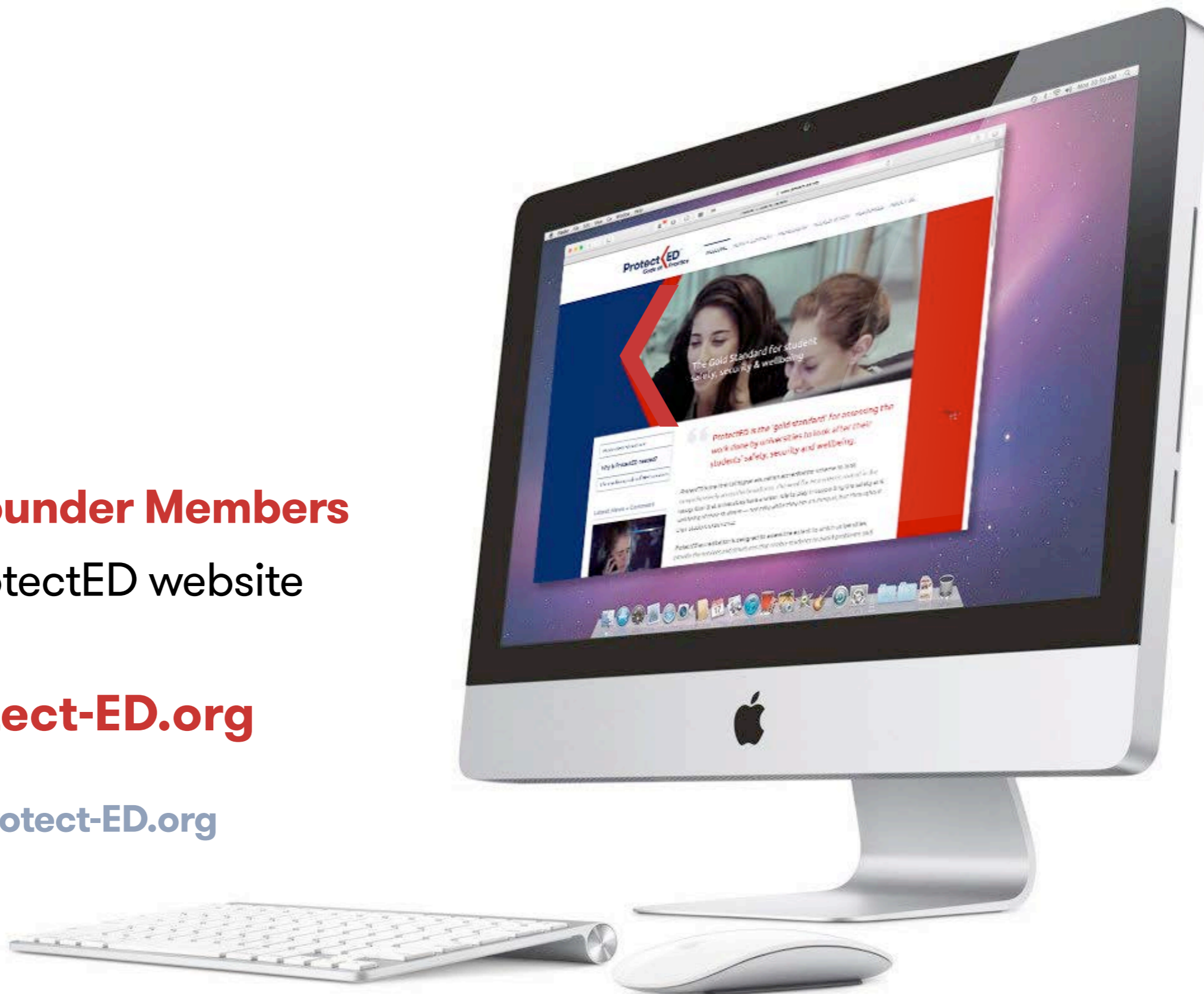


**Seeking Founder Members**

Visit the ProtectED website

**[www.Protect-ED.org](http://www.Protect-ED.org)**

Email [info@Protect-ED.org](mailto:info@Protect-ED.org)



# ProtectED™

Code of Practice

Thank you



ProtectED  
New Adelphi Building  
The Crescent  
Salford M5 4BR  
United Kingdom

