



For
Overseas
Universities

**A New University
(to be established in 2021)
Introduction Document
for
Overseas Partner Universities**

March, 2019

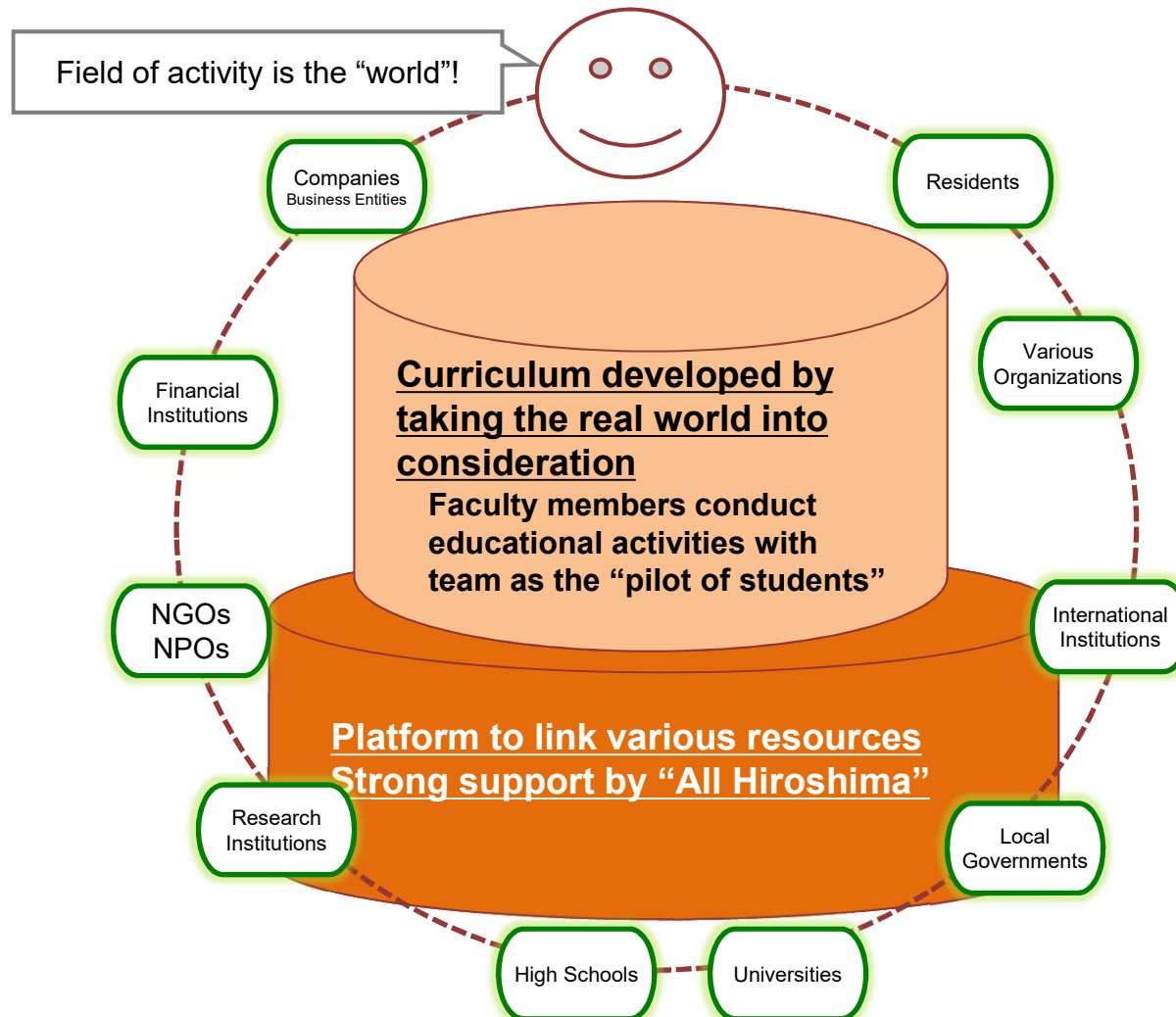


Hiroshima Prefecture, Prefectural University of Hiroshima

Plan to Establish New University

Quota	About 100 students (per class year)
Status of Establishment	Established under an already-existing prefectural public university corporation (two universities under one corporation)
Place of Establishment	Nobori-cho, Naka-ku, Hiroshima City (planned site)
When to Open	April 2021 (tentative goal)
Main Characteristics	<ul style="list-style-type: none">○ Curricula that focus thoroughly on the development of competency through the acquisition of skills and knowledge, such as liberal arts, ICT literacy and data science, and repeating problem-based learning practices○ Development of practical education and support for students' career design based on the "platform" for collaboration with various entities outside the university○ Practical English curriculum and classes given in both Japanese and English○ Establishment of an environment in which international and Japanese students work hard together in a diverse value system

- ◆ The new university will actualize revolutionary higher education for students to acquire essential knowledge and abilities for resolving social issues in global diverse society under a curriculum with practical activities such as Project Based Learning in collaboration with number of private companies, local governments and international organizations, etc.



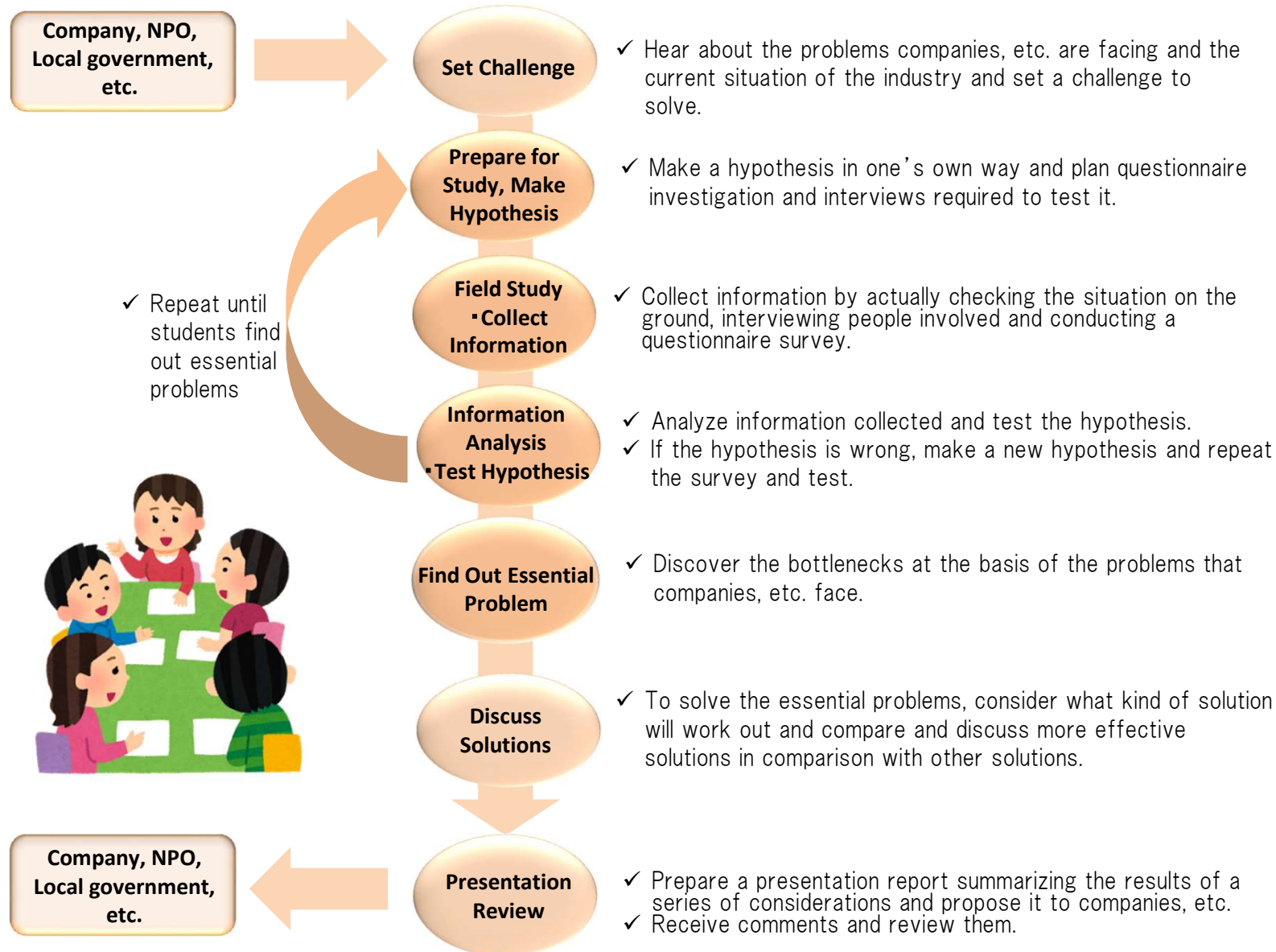
➤ How international students benefit from studying at our new university (1)

- ✓ We will offer a magnificent experience opportunities for overseas students to take practical learning activities in collaboration with various local and international organizations based in Hiroshima.

◆ Practical project-based seminars

- ✓ In our project-based learning, Japanese and international students will collaborate in groups and tackle the project provided by external organizations.
- ✓ Since our project-based seminars will be offered every three months, students can build their experience through multiple seminars, depending on how long they study abroad.

Flow of PBL Proposed by Company



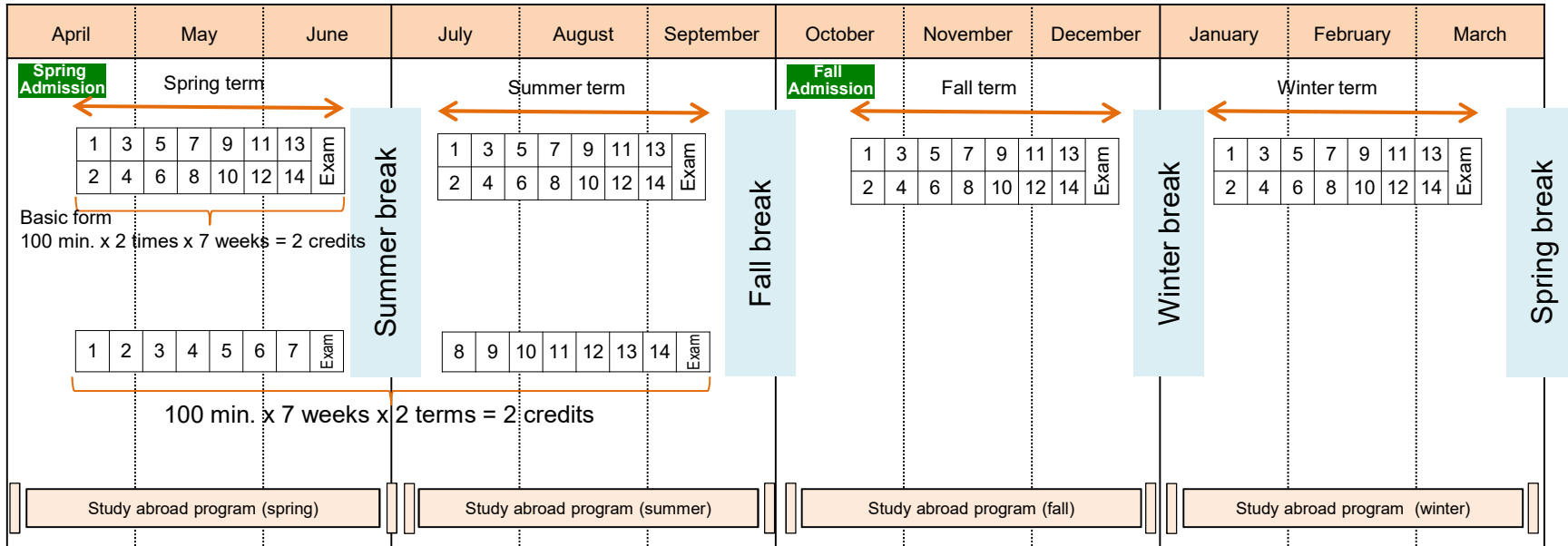
➤ How international students benefit from studying at our new university (2)

✓ Students will be able to set up a flexible study plans selecting subjects lectured in both English and Japanese based on their study period and academic interests under quarterly student calendar system.

◆ Study-abroad programs responsive to individual needs

- ✓ Programs can be designed to welcome students based on their own school's academic calendar for 3-month, 6-month, or 1-year periods.
- ✓ All courses including liberal arts courses will be offered in both Japanese and English, allowing students to only take courses taught in English.

Academic Calendar with Complete Quarter System



◆ Problem-based learning exercises on a three-month basis

- In the case of problem-based learning exercises, classroom hours can be used mainly in progress report to the faculty and group work, and visiting companies and field work will be set up outside classroom hours.
- Moreover, instead of examination, debriefing session (presentation) will be held.
- Problem-based learning exercises will be developed on a three-month or six-month basis depending on circumstances of sponsor companies and partners and difficulty level of set challenges.

➤ How international students benefit from studying at our new university (3)

- ✓ Overseas students will be trained to acquire fundamental logical skills to build "Peace" and "Partnership" in Hiroshima, the global iconic city for peace.

◆ Learning about peace in Hiroshima, the city of international peace

- ✓ With the aim of helping realize a sustainable world, our liberal arts courses will be based on the themes of the following 5Ps: Peace, Partnerships, People, Prosperity, and Planet.
- ✓ Under the theme of Peace, we offer an educational program characteristic of Hiroshima, a city of international peace, which reconstructed itself after being destroyed by an atomic bomb.

■ ■ ■ Located in Central Hiroshima, a City of International Peace ■ ■ ■



Hiroshima Castle



Shukkeien Garden



JAPAN

Hiroshima

Tokyo



Atomic-Bomb Dome



Peace Memorial Park



New Univ.

about
10 minutes
by walk

Hiroshima
Station

➤ How international students benefit from studying at our new university (4)

- ✓ Our 15-story campus building has safe and comfortable dormitory with private rooms to accommodate over 100 students and is located in the center of Hiroshima.

◆ A safe and comfortable living environment

- ✓ Our school will provide international students with a comfortable on-campus dormitory.
- ✓ Our students will support international students in their studies and daily life as buddies and mentors.
- ✓ We welcome many international students and foreign teachers, creating a campus with diverse values, to offer an attractive college life full of energy.

Our On-campus Dormitory for International Students

« Image of the campus »



- Each floor accommodates about 20 people. (Private rooms + shared rooms)
- Each private room has a bath and toilet.
- Coin laundry machines are available.

15F Cafeteria

14F Social space

9F - 13F Residential quarters

1F - 8F School building

* Rent will be about ¥26,000/month.

The above rent does not include food or utility expenses.

➤ How international students benefit from studying at our new university (5)

- ✓ Under our mutual student exchange programs, both schools will exempt exchange students from paying tuition, reducing the financial burden from international students.

◆ Mutual student exchange programs

- ✓ In principal, the same number of students will be mutually exchanged, and both schools will exempt exchange students from paying tuition; students will only need to pay tuition to their own school.
- ✓ Students will need to pay their travel and living expenses including accommodation and food.

Would your school be interested in becoming our partner and mutually exchanging students?

◆ **Conditions required of partner universities**

- ✓ We seek universities offering English-taught courses equivalent to our liberal arts courses, e.g. humanities and social sciences, economics, business administration, and environmental studies.
- ✓ We seek universities with safe student dormitories.
- ✓ In principle, the same number of students will be mutually exchanged, and both schools will exempt exchange students from paying tuition; students will only need to pay tuition to their own school.

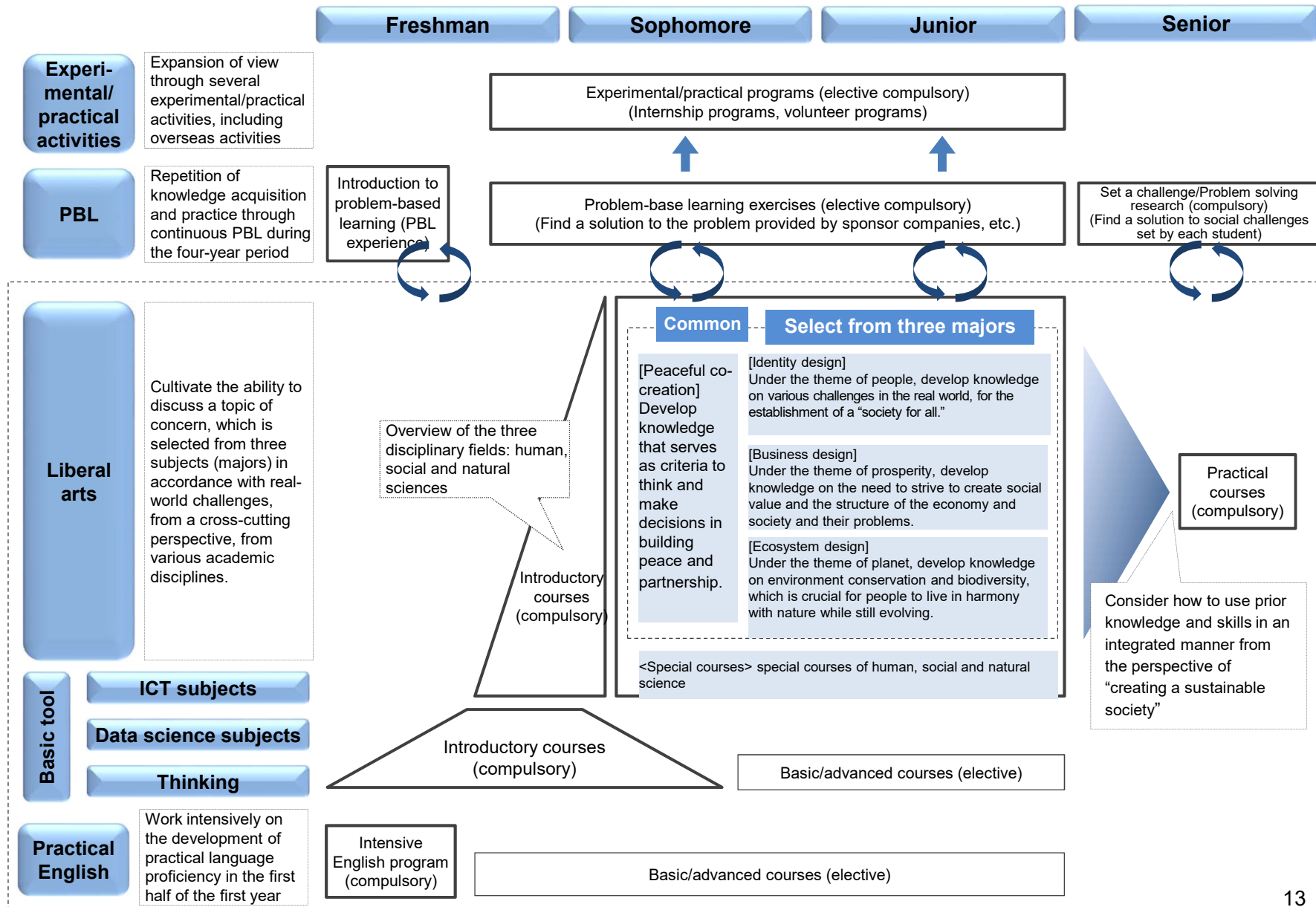
◆ **3-month mutual student exchange programs**

- ✓ We will offer 3-month, 6-month, and 1-year mutual student exchange programs.

◆ **Student dispatch programs**

- ✓ If mutual student exchange proves impossible, schools may use student dispatch programs where only one school sends its students.

Curriculum System



Fundamental Subjects for Project Based Learning

<Liberal arts subject classification>

Category	Classification	Goal
Practice	Sustainable world and human beings	The aim of this course is to develop abilities to use and discuss prior knowledge from a cross-cutting perspective.
Development	Major	Identity design Under the theme of people, the aim of this course is to develop knowledge on the framework of respect for diversity in culture, religion and values in multi-cultural society, sustainable medical policies, and other various challenges in the real world, for the establishment of a "society for all."
		Business design Under the theme of prosperity, the aim of this course is to develop knowledge on the need for each country or company to strive not to pursue individual profit but to create social value, the structure of a globalizing economy and society and their problems, and the future of industry and technological development.
		Ecosystem design Under the theme of planet, the aim of this course is to develop knowledge on environment conservation and biodiversity, which is crucial for people to live in harmony with nature while still evolving, as well as various plans and initiatives the international community has with regard to these issues and their response to natural disasters.
Basics	Peaceful co-creation	The aim of this course is to develop knowledge that serve as criteria to think and make decisions in building peace and partnership.
Introduction	Human, social and natural science	The aim of this course is to understand the basics of human diversity, social structure and coexistence with nature

<English and basic tool subject classification>

Category	Classification	Goal
English	Practical English	The aim of this course is to develop practical proficiency in English to the level where students can take classes in English from third term in freshman year onward, through the intensive English program in which students are required to practice thoroughly speaking, listening, reading, writing and presentation skills until they reach a designated level during the first half (first and second terms) of freshman year.
	ICT	The aim of this course is to develop ICT literacy to understand the basic system of, how to use and the risk of ICT and AI and to use ICT as a tool for solving problems and drafting a business plan.
Basic tool	Data science	The aim of this course is to develop skills to make a hypothesis, think of what data is required to test it, collect and analyze data, collect data for problem-solving through the scheme of testing the hypothesis, and use them to make decision.
	Thinking	The aim of this course is to develop a series of skills to be able to conduct research, inspire, overview, communicate, negotiate, create a team, and perform, which is required to solve problems in the real world, in addition to basic thinking skills such as logical thinking and critical thinking.